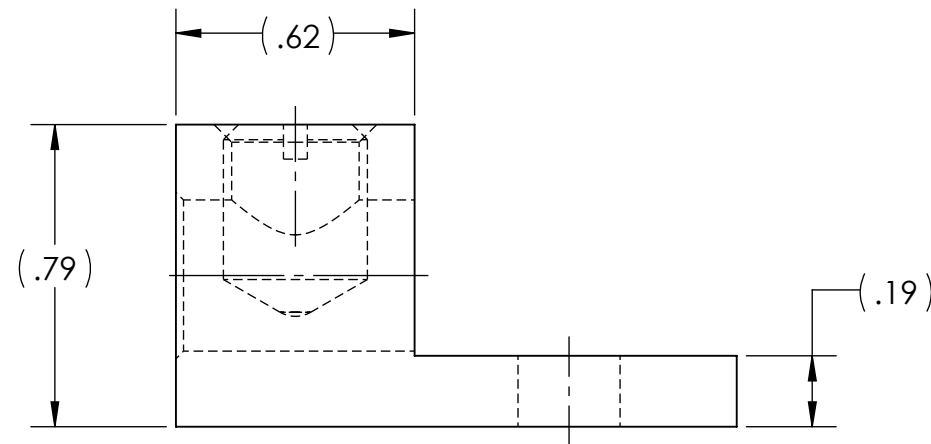
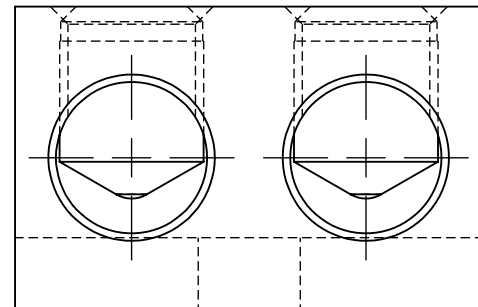


STUD SIZE: 1/4

METAL STAMPING TO READ:

1. PENN-UNION
2. L2A-0
3. 1/0-14
4. AL9CU



NOTES:

1. MANUFACTURED FROM HIGH STRENGTH ALUMINUM ALLOY EXTRUSION
2. ELECTRO-TIN PLATED TO ENSURE MINIMUM CONTACT RESISTANCE AND CORROSION PROTECTION
3. CONNECTORS ARE RATED FOR 600V, 90°C APPLICATIONS
4. THE USE OF OXIDE INHIBITOR IS RECOMMENDED FOR ALL ALUMINUM TERMINATIONS
5. cULus LISTED PER UL486A-B FOR ALUMINUM AND COPPER CONDUCTORS AT 90°C
6. INSTALLATION TORQUE: 40 IN•LB, STRIP LENGTH: .75
7. ALL DIMENSIONS IN INCHES UNLESS OTHERWISE SPECIFIED
8. APPROX. WEIGHT: 0.066 LB



NO.	ECN	DATE
8	12037	2/22/2021
7	11870	8/2/19
6	11611	10/21/15
5	11026	9/4/09
4	10159C	11/7/98
3	8955	2/24/88

QTY.	PT.	NAME OR DESCRIPTION
2	2	SET SCREW, ALUMINUM, TIN PLATED
1	1	LUG BODY, ALUMINUM, TIN PLATED
ALUMINUM TERMINAL LUG for 1/0-#14 STR. 2 CONDUCTOR		
REF. DWG'S: 5J06-98672S1		H:\5J06\98672S1_C
		DRAWN BY: QJB DATE: 4/24/2023 CHK'D: NAK SCALE: 2:1 INTERPRET PER ASME Y14.5-2009 FILE: 5J06
229 WATERFORD STREET EDINBORO, PA 16412 USA		DWG. NO. L2A-0 REV. 8