
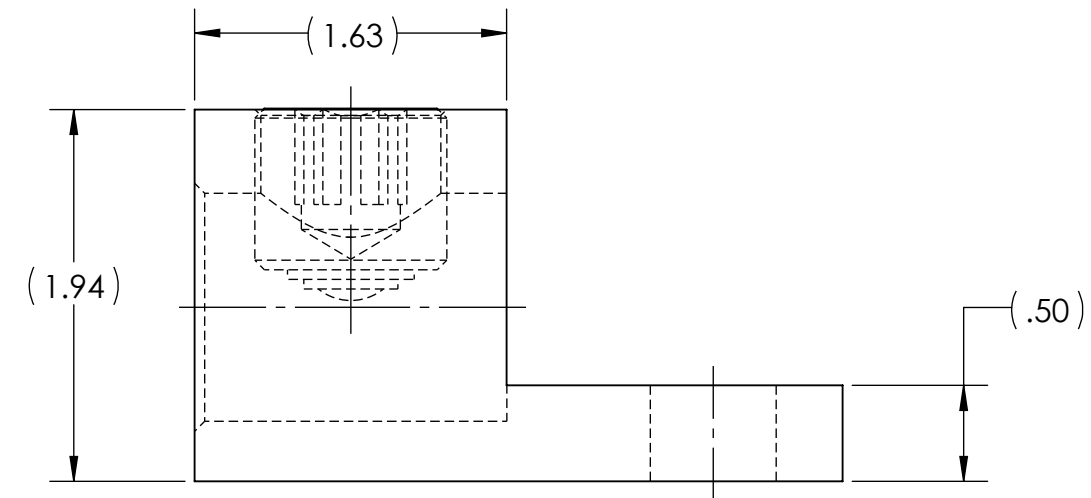
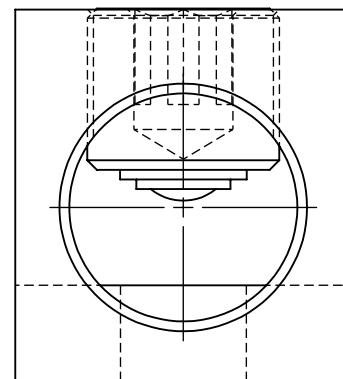


METAL STAMPING TO READ:
 1. PENN-UNION
 2. "CATALOG NUMBER"
 3. 500-1000 MCM
 4. AL9CU
 5. 

CATALOG NUMBER	STUD SIZE	APPROX. WEIGHT (LB)
LA-1000	5/8	0.515
LA-1000-1/2	1/2	0.521



NOTES:

- MANUFACTURED FROM HIGH STRENGTH ALUMINUM ALLOY EXTRUSION
- ELECTRO-TIN PLATED TO ENSURE MINIMUM CONTACT RESISTANCE AND CORROSION PROTECTION
- CONNECTORS ARE RATED FOR 600V, 90°C APPLICATIONS
- THE USE OF OXIDE INHIBITOR IS RECOMMENDED FOR ALL ALUMINUM TERMINATIONS
- cULus LISTED PER UL486A-B FOR ALUMINUM AND COPPER CONDUCTORS AT 90°C
- INSTALLATION TORQUE: 600 IN•LB, STRIP LENGTH: 1.75
- ALL DIMENSIONS IN INCHES UNLESS OTHERWISE SPECIFIED



NO.	ECN	DATE
1	B20-25	10/14/2020
REVISIONS		

QTY.	PT.	NAME OR DESCRIPTION
1	2	SET SCREW, ALUMINUM, TIN PLATED
1	1	LUG BODY, ALUMINUM, TIN PLATED
ALUMINUM TERMINAL LUG for 1000-500 MCM		
REF. DWG'S: 5J03-96613		H:\5J03\96613_C
DRAWN BY: QJB		DATE: 4/24/2023
SCALE: 1:1		CHK'D: NAK
SIZE: B		INTERPRET PER ASME Y14.5-2009
DWG. NO. LA-1000		FILE: 5J03
REV. 1		

