
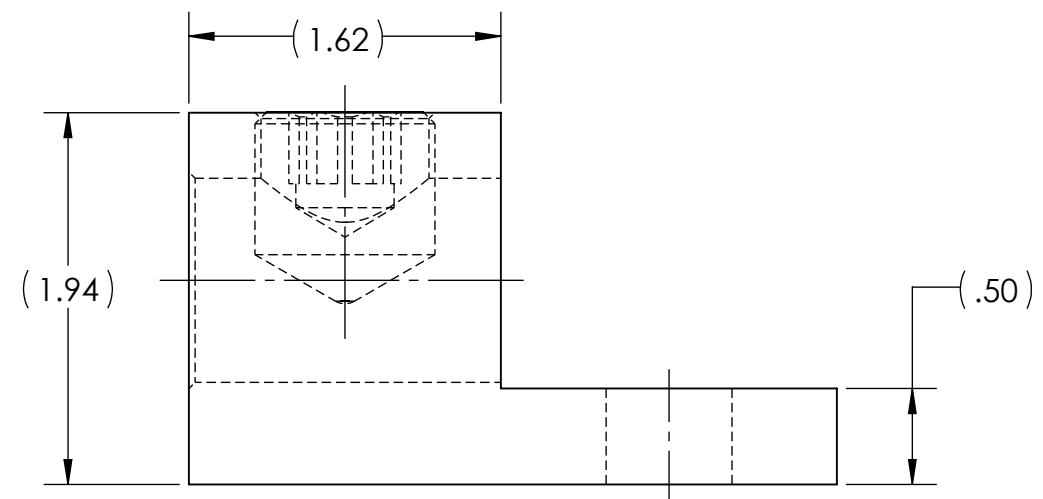


- METAL STAMPING TO READ:
1. PENN-UNION
 2. LA-800
 3. 800-300 MCM
 4. AL9CU
 5. 




NOTES:

1. MANUFACTURED FROM HIGH STRENGTH ALUMINUM ALLOY EXTRUSION
2. ELECTRO-TIN PLATED TO ENSURE MINIMUM CONTACT RESISTANCE AND CORROSION PROTECTION
3. CONNECTORS ARE RATED FOR 600V, 90°C APPLICATIONS
4. THE USE OF OXIDE INHIBITOR IS RECOMMENDED FOR ALL ALUMINUM TERMINATIONS
5. cULus LISTED PER UL486A-B FOR ALUMINUM AND COPPER CONDUCTORS AT 90°C
6. INSTALLATION TORQUE: 500 IN•LB, STRIP LENGTH: 1.75
7. ALL DIMENSIONS IN INCHES UNLESS OTHERWISE SPECIFIED
8. APPROX. WEIGHT: 0.552 LB



NO.	ECN	DATE
1	12055	3/26/2021
REVISIONS		

		1	2	SET SCREW, ALUMINUM, TIN PLATED
		1	1	LUG BODY, ALUMINUM, TIN PLATED
QTY.		PT.		NAME OR DESCRIPTION
ALUMINUM TERMINAL LUG				
for 800-300 MCM				
REF. DWG'S: 5J03-96612			H:\5J03\96612_C	
DRAWN BY: QJB		DATE: 4/24/2023		CHK'D: NAK
SCALE: 1:1		INTERPRET PER ASME Y14.5-2009		FILE: 5J03
SIZE: B		DWG. NO. LA-800		REV. 1
 229 WATERFORD STREET EDINBORO, PA 16412 USA				