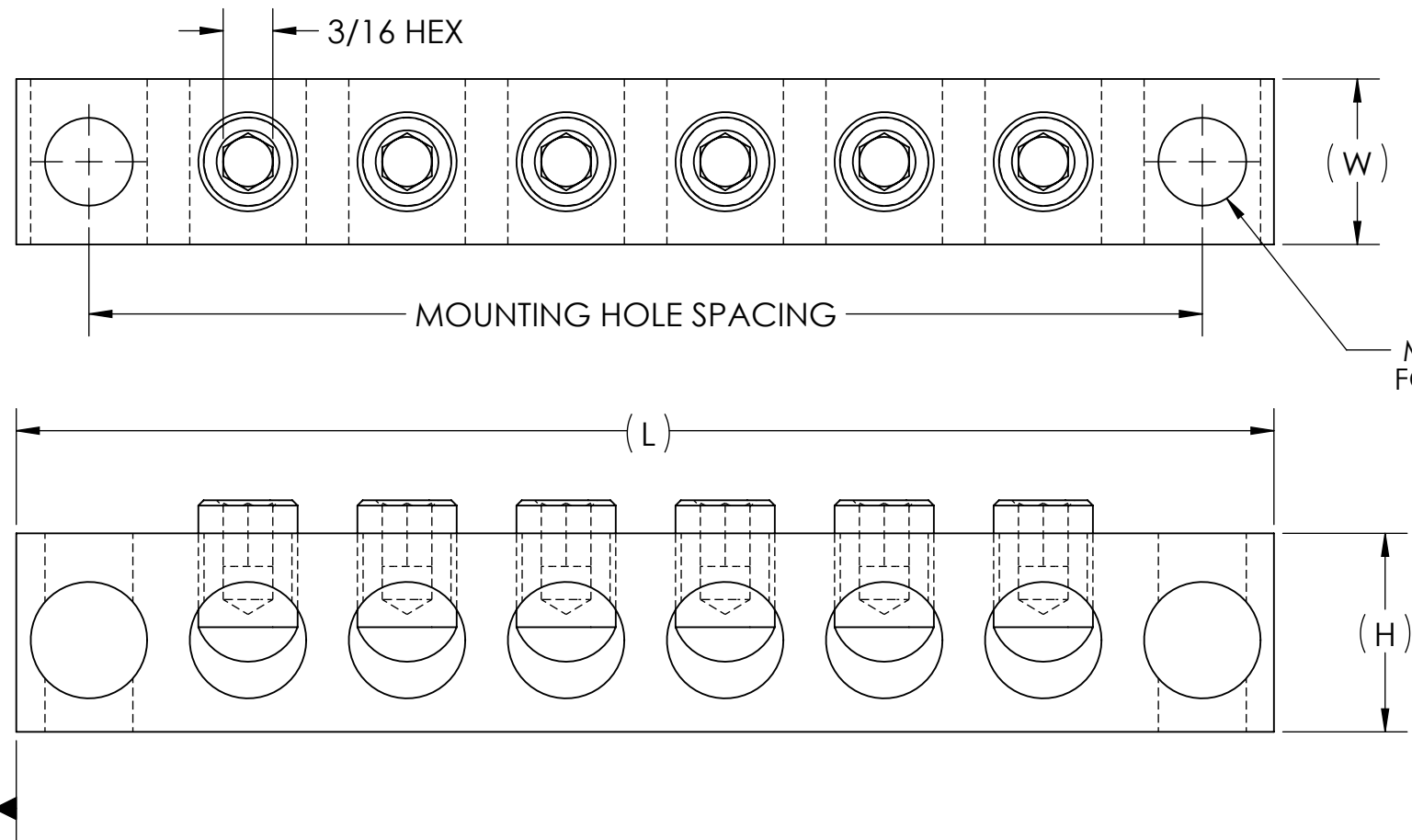
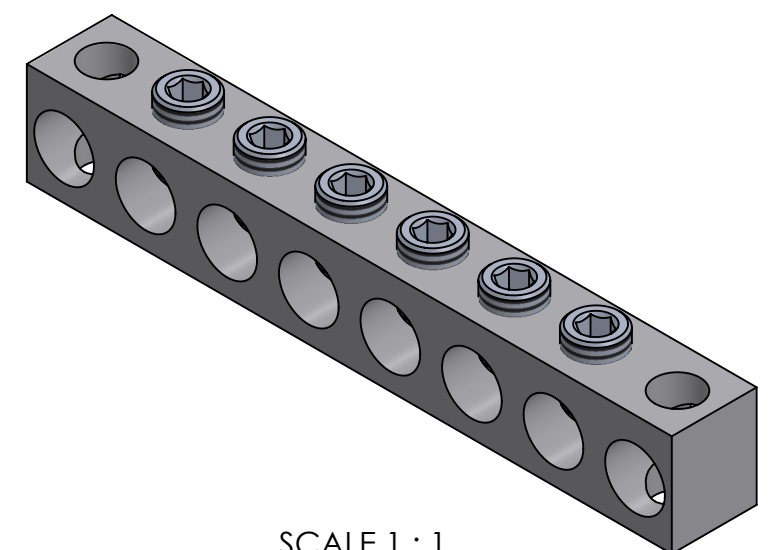


CAT. NO.	WIRE RANGE	NUMBER OF CIRCUITS	TOTAL NUMBER OF HOLES	L	W	H	CONDUCTOR HOLE SPACING	MOUNTING HOLE SPACING	MOUNTING HOLE POSITIONS	EST. WEIGHT	CONDUCTOR INSTALLATION TORQUE
NA-417	2/0-14	2	3	1.75	.63	.75	.60	-	2	0.056 LB	14-10 AL/CU 35 IN•LB 8 AL 50 IN•LB 6-2/0 AL 120 IN•LB 8-2/0 CU 120 IN•LB
NA-418	2/0-14	3	5	2.95	.63	.75	.60	1.20	2 AND 4	0.093 LB	
NA-419	2/0-14	6	8	4.75	.63	.75	.60	4.21	1 AND 8	0.157 LB	



- STAMPING TO READ:
1. PENN-UNION OR PUC
 2. CAT. NO.
 3. WIRE RANGE
 4. AL-CU
 - 5.

MOUNTING HOLES SIZED FOR 5/16 BOLT



SCALE 1 : 1

NOTES:

1. ALL DIMENSIONS IN INCHES UNLESS OTHERWISE SPECIFIED
2. FIGURE IS REPRESENTATIVE. EXACT FEATURES MAY VARY
3. MOUNTING HOLE LOCATIONS ARE NOTED IN TABLE BASED ON A SEQUENTIAL POSITION FROM DATUM A FACE
4. FOR USE IN A VARIETY OF NEUTRAL AND GROUNDING APPLICATIONS
5. BODIES ARE MADE FROM TIN PLATED HIGH STRENGTH ALUMINUM ALLOY
6. SET SCREWS ARE MADE FROM TIN PLATED HIGH STRENGTH ALUMINUM ALLOY
7. DUAL RATED FOR COPPER OR ALUMINUM CONDUCTORS
8. cURus RECOGNIZED PER UL486A-B FOR POWER AND UL LISTED PER UL467 FOR GROUNDING



NO.	ECN	DATE
1	12225	1/6/2023
REVISIONS		

QTY.	PT.	NAME OR DESCRIPTION
		ALUMINUM NEUTRAL BARS
REF. DWG'S: 4303-56477		H:\4303\56477_C
DRAWN BY: QJB		DATE: 2/2/2023
SCALE: 3:2		CHK'D: NAK
SIZE: B		INTERPRET PER ASME Y14.5-2009
FILE: 4303		
SEE TABLE	CAT. NO.	DWG. NO. NA SERIES
		REV. 1