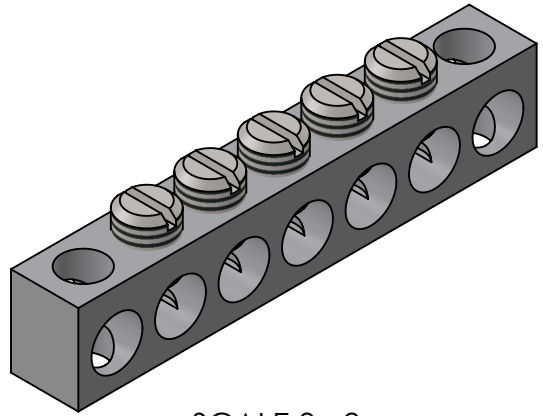
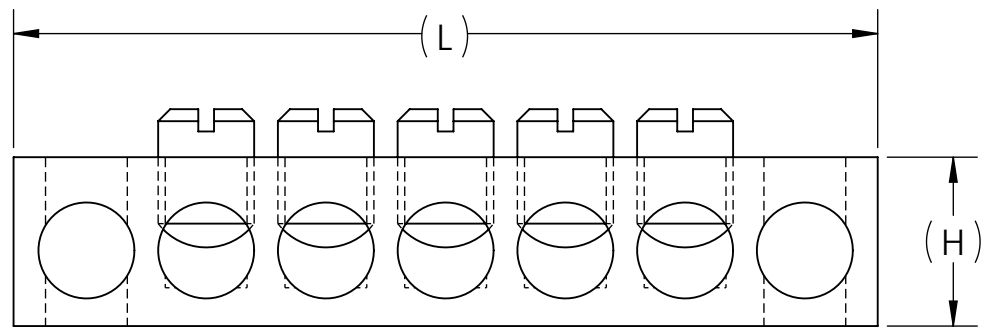
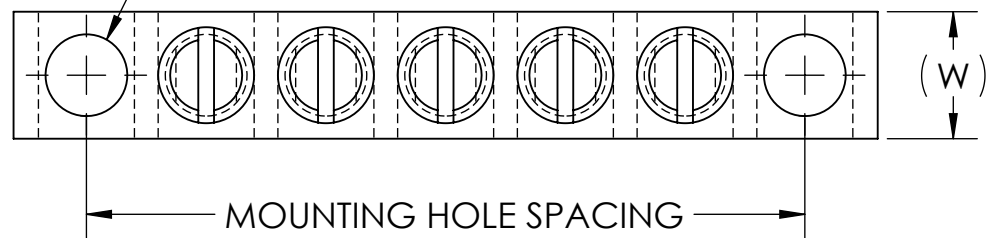


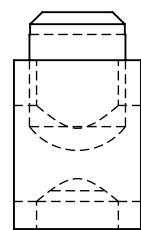
| DWG. NO.   | NA SERIES | REV. - | CAT. NO. | WIRE RANGE | NUMBER OF CIRCUITS | TOTAL NUMBER OF HOLES | L   | W    | H        | CONDUCTOR HOLE SPACING | MOUNTING HOLE SPACING  | MOUNTING HOLE POSITIONS                   | EST. WEIGHT | INSTALLATION TORQUE |
|--|-----------|--------|----------|------------|--------------------|-----------------------|-----|------|----------|------------------------|--|---|-------------|---------------------|
|  <p>SCALE 3 : 2</p> | NA-401    | 4-14   | 2        | 3          | .95                | .33                   | .44 | .31  | -        | 2                      | 0.016 LB   | 14-8 AL/CU 20 IN•LB<br>6-4 AL/CU 31 IN•LB |             |                     |
|  | NA-402    | 4-14   | 4        | 5          | 1.57               | .33                   | .44 | .31  | -        | 3                      | 0.029 LB   |   |             |                     |
|  | NA-403    | 4-14   | 5        | 6          | 1.88               | .33                   | .44 | .31  | -        | 3                      | 0.036 LB   |   |             |                     |
|  | NA-404    | 4-14   | 6        | 7          | 2.25               | .33                   | .44 | .31  | -        | 4                      | 0.043 LB   |   |             |                     |
|  | NA-405    | 4-14   | 4        | 6          | 1.88               | .33                   | .44 | .31  | .94      | 1 AND 4                | 0.031 LB   |   |             |                     |
|  | NA-406    | 4-14   | 5        | 7          | 2.25               | .33                   | .44 | .31  | 1.87     | 1 AND 7                | 0.039 LB   |   |             |                     |
|  | NA-407    | 4-14   | 5        | 7          | 2.25               | .33                   | .44 | .31  | 1.25     | 2 AND 6                | 0.039 LB   |   |             |                     |
|  | NA-408    | 4-14   | 6        | 8          | 2.56               | .33                   | .44 | .31  | .94      | 4 AND 7                | 0.045 LB   |   |             |                     |
|  | NA-409    | 4-14   | 7        | 9          | 2.87               | .33                   | .44 | .31  | 1.25     | 3 AND 7                | 0.052 LB   |   |             |                     |
|  | NA-410    | 4-14   | 9        | 11         | 3.50               | .33                   | .44 | .31  | 3.12     | 1 AND 11               | 0.066 LB   |   |             |                     |
|  | NA-411    | 4-14   | 10       | 12         | 3.81               | .33                   | .44 | .31  | 3.43     | 1 AND 12               | 0.072 LB   |   |             |                     |
|  | NA-412    | 4-14   | 12       | 14         | 4.43               | .33                   | .44 | .31  | 4.05     | 1 AND 14               | 0.086 LB   |   |             |                     |
|  | NA-413    | 4-14   | 15       | 17         | 5.37               | .33                   | .44 | .31  | 4.99     | 1 AND 17               | 0.106 LB   |   |             |                     |
|  | NA-414    | 4-14   | 20       | 22         | 6.93               | .33                   | .44 | .31  | 6.55     | 1 AND 22               | 0.139 LB   |   |             |                     |
|  | NA-415    | 4-14   | 190      | 190        | 60.00              | .33                   | .44 | .31  | -        | -                      | 1.286 LB   |   |             |                     |
| NA-416   | 2-12      | 10     | 12       | 4.83       | .38                | .50                   | .40 | 3.17 | 3 AND 11 | 0.130 LB               | 12-10 AL 35 IN•LB<br>8 AL 40 IN•LB<br>6-4 AL 45 IN•LB<br>2 AL 50 IN•LB |   |             |                     |

NA-401 THROUGH NA-415  
MOUNTING HOLES SIZED FOR #10 BOLT  
NA-416 MOUNTING HOLES SIZED FOR 1/4 BOLT



STAMPING TO READ:

- PENN-UNION OR PUC
- CAT. NO.
- WIRE RANGE
- AL-CU (NA-401 THROUGH NA-415)  
AL (NA-416)



| NO.       | ECN | DATE |
|-----------|-----|------|
| REVISIONS |     |      |

NOTES:

- ALL DIMENSIONS IN INCHES UNLESS OTHERWISE SPECIFIED
- FIGURE IS REPRESENTATIVE. EXACT FEATURES MAY VARY
- MOUNTING HOLE LOCATIONS ARE NOTED IN TABLE BASED ON A SEQUENTIAL POSITION FROM DATUM A FACE
- FOR USE IN A VARIETY OF NEUTRAL AND GROUNDING APPLICATIONS
- BODIES ARE MADE FROM TIN PLATED HIGH STRENGTH ALUMINUM ALLOY
- SLOTTED HEAD SET SCREWS ARE MADE FROM MILD STEEL AND TIN PLATED
- NA-401 THROUGH NA-415 ARE DUAL RATED FOR COPPER OR ALUMINUM CONDUCTORS. NA-416 IS RATED FOR USE WITH ALUMINUM CONDUCTORS ONLY
- cURus RECOGNIZED PER UL486A-B FOR POWER AND UL LISTED PER UL467 FOR GROUNDING

| QTY.                   | PT. | NAME OR DESCRIPTION           |
|------------------------|-----|-------------------------------|
|                        |     | ALUMINUM NEUTRAL BARS         |
| REF. DWG'S: 4303-56446 |     | H:\4303\56446_C               |
| DRAWN BY: QJB          |     | DATE: 2/1/2022                |
| SCALE: 2:1             |     | CHK'D: NAK                    |
| SIZE: B                |     | INTERPRET PER ASME Y14.5-2009 |
| DWG. NO. NA SERIES     |     | FILE: 4303                    |
| REV. -                 |     |                               |