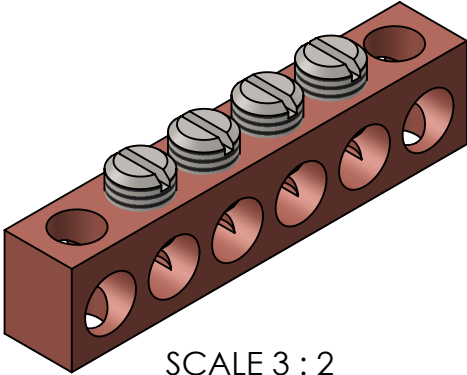
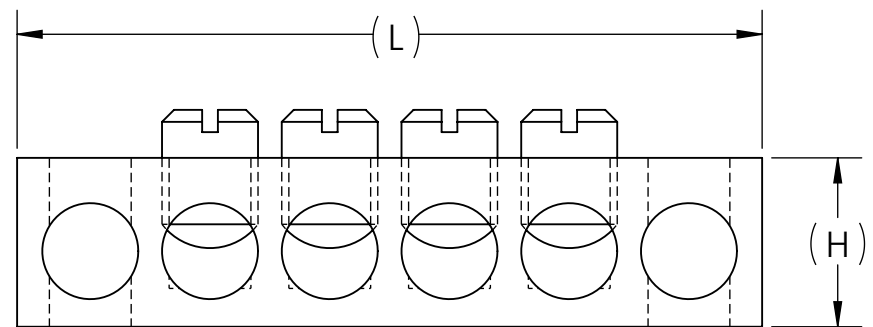
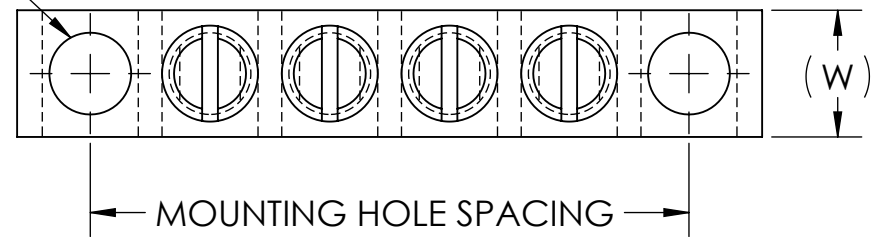



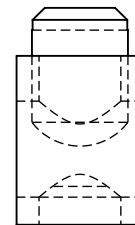
DWG. NO.	NC SERIES	REV. 1	CAT. NO.	WIRE RANGE	NUMBER OF CIRCUITS	TOTAL NUMBER OF HOLES	L	W	H	CONDUCTOR HOLE SPACING	MOUNTING HOLE SPACING	MOUNTING HOLE POSITIONS	EST. WEIGHT	INSTALLATION TORQUE
 <p>SCALE 3 : 2</p>	NC-420	4-14	4	6	1.94	.33	.44	.31	1.56	1 AND 6	0.066 LB	14-8 20 IN•LB 6-4 31 IN•LB		
	NC-421	4-14	5	7	2.25	.33	.44	.31	1.87	1 AND 7	0.078 LB			
	NC-422	4-14	6	8	2.56	.33	.44	.31	2.18	1 AND 8	0.090 LB			
	NC-423	4-14	12	14	4.43	.33	.44	.31	4.05	1 AND 14	0.163 LB			
	NC-424	4-14	13	15	4.74	.33	.44	.31	3.12	3 AND 13	0.175 LB			
	NC-425	4-14	13	15	4.74	.33	.44	.31	1.56	6 AND 11	0.175 LB			
	NC-426	4-14	190	190	60.00	.33	.44	.31	-	-	2.347 LB			
	NC-427	2-14	3	5	2.00	.38	.50	.40	1.59	1 AND 5	0.083 LB	14-8 20 IN•LB 6-4 45 IN•LB 2 50 IN•LB		
	NC-428	2-14	6	8	3.25	.38	.50	.40	1.98	2 AND 7	0.149 LB			

NC-420 THROUGH NC-426
MOUNTING HOLES SIZED FOR
#10 BOLT
NC-427 AND NC-428
MOUNTING HOLES SIZED FOR
1/4 BOLT



A

- STAMPING TO READ:
- PENN-UNION OR PUC
 - CAT. NO.
 - WIRE RANGE
 - CU
 - 



NOTES:

- ALL DIMENSIONS IN INCHES UNLESS OTHERWISE SPECIFIED
- FIGURE IS REPRESENTATIVE. EXACT FEATURES MAY VARY
- MOUNTING HOLE LOCATIONS ARE NOTED IN TABLE BASED ON A SEQUENTIAL POSITION FROM DATUM A FACE
- FOR USE IN A VARIETY OF NEUTRAL AND GROUNDING APPLICATIONS
- BODIES ARE MADE FROM HIGH STRENGTH COPPER
 - FOR TIN PLATED VERSION ADD SUFFIX "TN" TO CAT. NO.
- SLOTTED HEAD SET SCREWS ARE MADE FROM MILD STEEL AND TIN PLATED
- RATED FOR COPPER CONDUCTORS
- cURus RECOGNIZED PER UL486A-B FOR POWER AND UL LISTED PER UL467 FOR GROUNDING

QTY.	PT.	NAME OR DESCRIPTION
		COPPER NEUTRAL BAR
REF. DWG'S: 2332-56467		H:\2332\56467_C
DRAWN BY: QJB		DATE: 2/3/2023
SCALE: 2:1		CHK'D: NAK
SIZE: B		INTERPRET PER ASME Y14.5-2009
FILE: 2332		
DWG. NO. NC SERIES		REV. 1



NO.	ECN	DATE
1	12220	12/14/2022
REVISIONS		