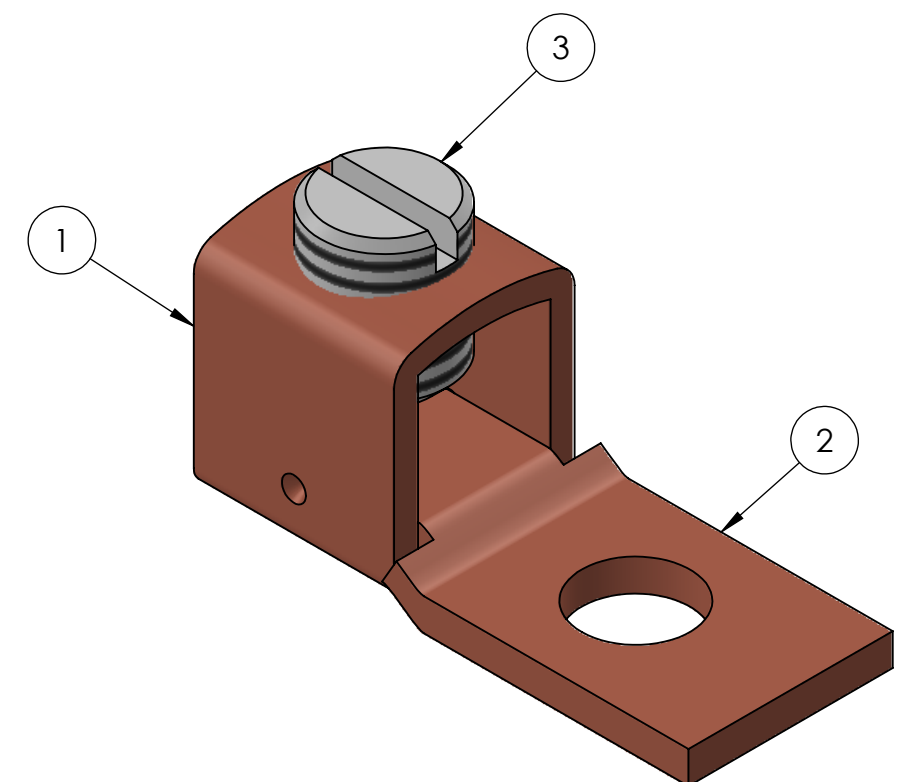
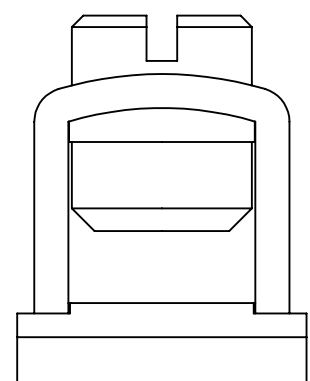
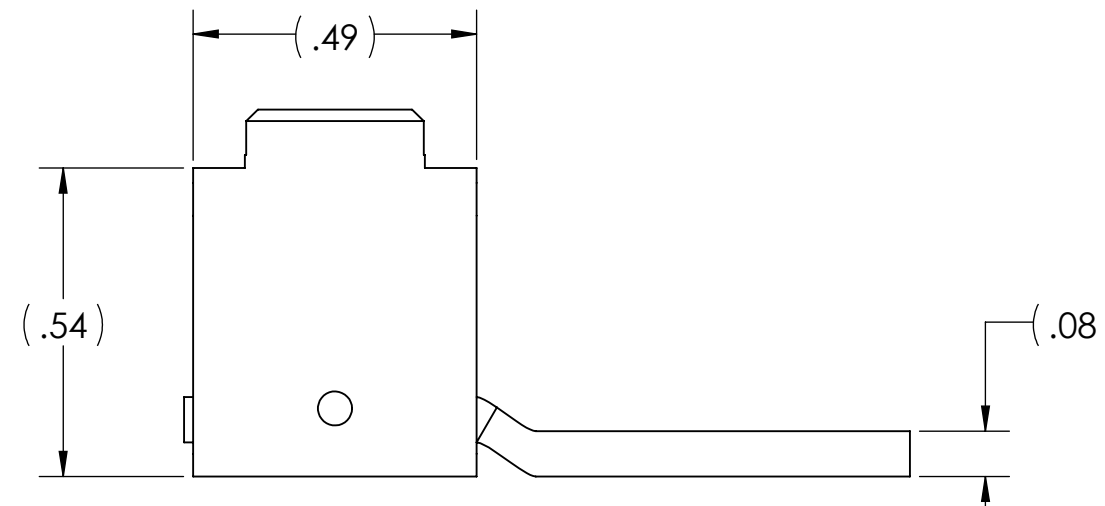
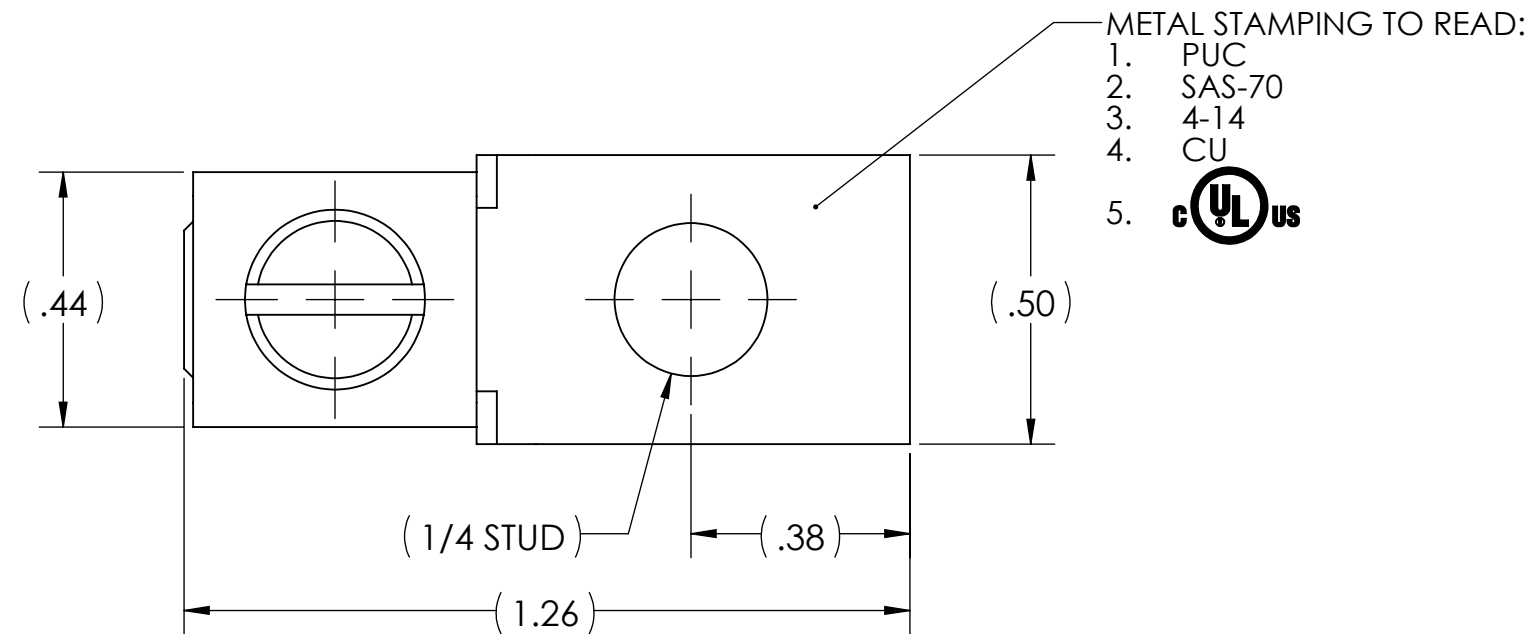


CONDUCTOR RANGE	INSTALLATION TORQUE (IN•LB)
14-10 AWG	20
8 AWG	25
6-4 AWG	35



- NOTES:
- FOR TIN PLATING, SUFFIX CATALOG NUMBER WITH "-TN"
 - ALL DIMENSIONS IN INCHES UNLESS OTHERWISE SPECIFIED
 - cULus LISTED PER UL486A-B FOR POWER APPLICATIONS UP TO 90°C
 - cULus LISTED PER UL467 FOR GROUNDING, BONDING, AND DIRECT BURIAL
 - APPROX. WEIGHT: 0.034 LB



NO.	ECN	DATE
1	REDRAWN	11/14/2016
REVISIONS		

QTY.	PT.	NAME OR DESCRIPTION
1	3	SET SCREW, STEEL, TIN PLATED
1	2	LUG TONGUE, COPPER
1	1	LUG BODY, COPPER
COPPER MECHANICAL LUG for 4-14 STR. COPPER CONDUCTORS		
REF. DWG'S: 5509-97090		H:\5509\SAS70
DRAWN BY: CLT		DATE: 7/19/2023
SCALE: 3:1		CHK'D: QJB
INTERPRET PER ASME Y14.5-2009		FILE: 5509
SIZE: B		DWG. NO. SAS-70
REV. 1		

