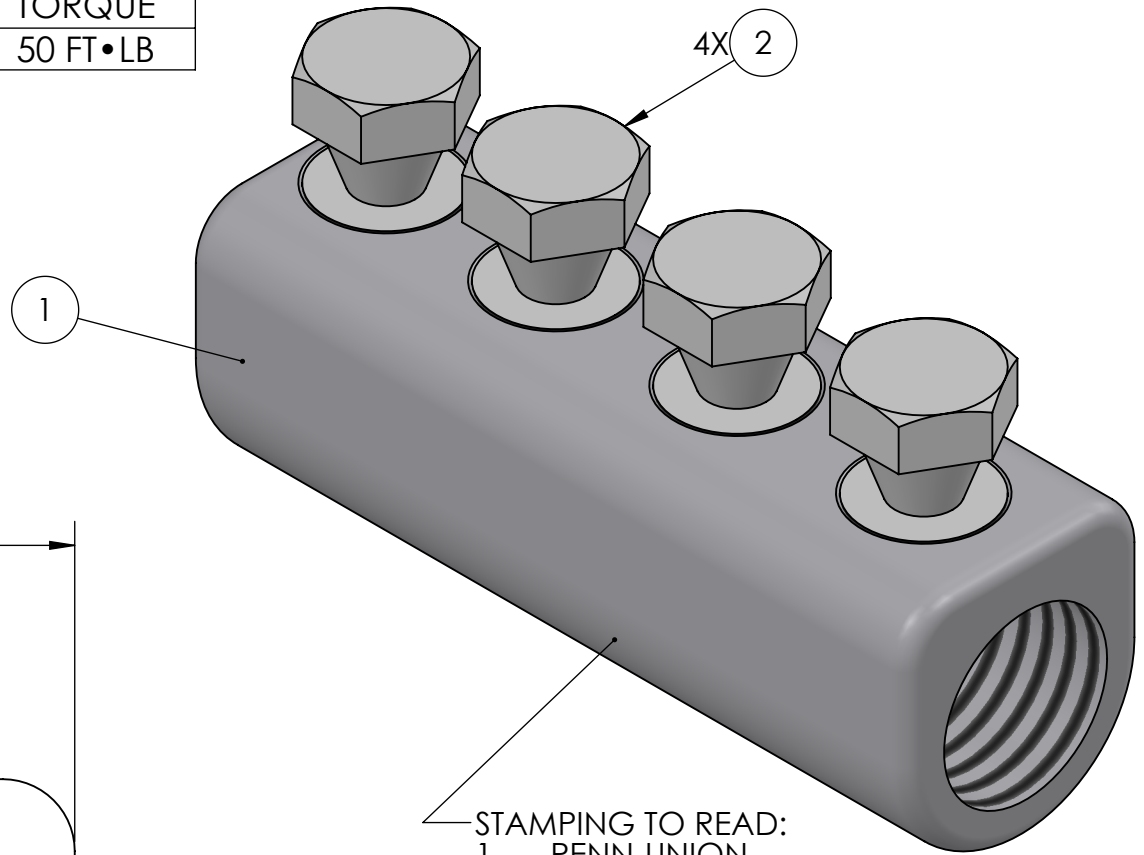
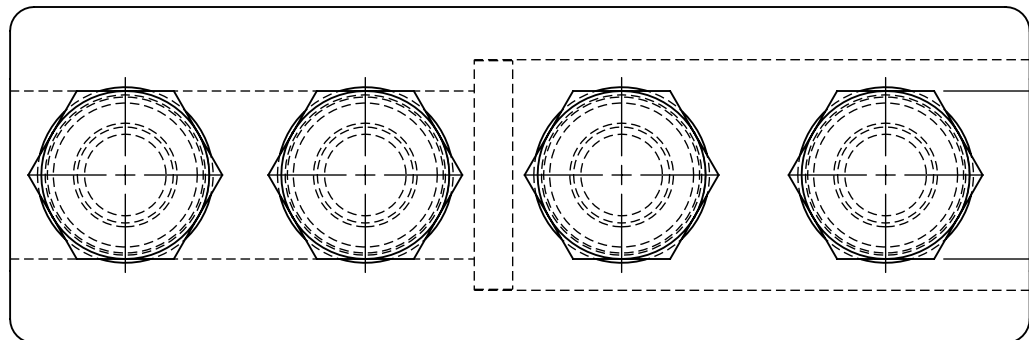
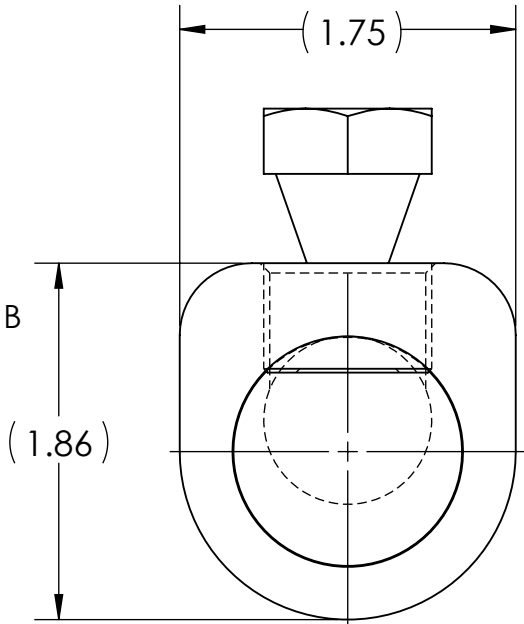
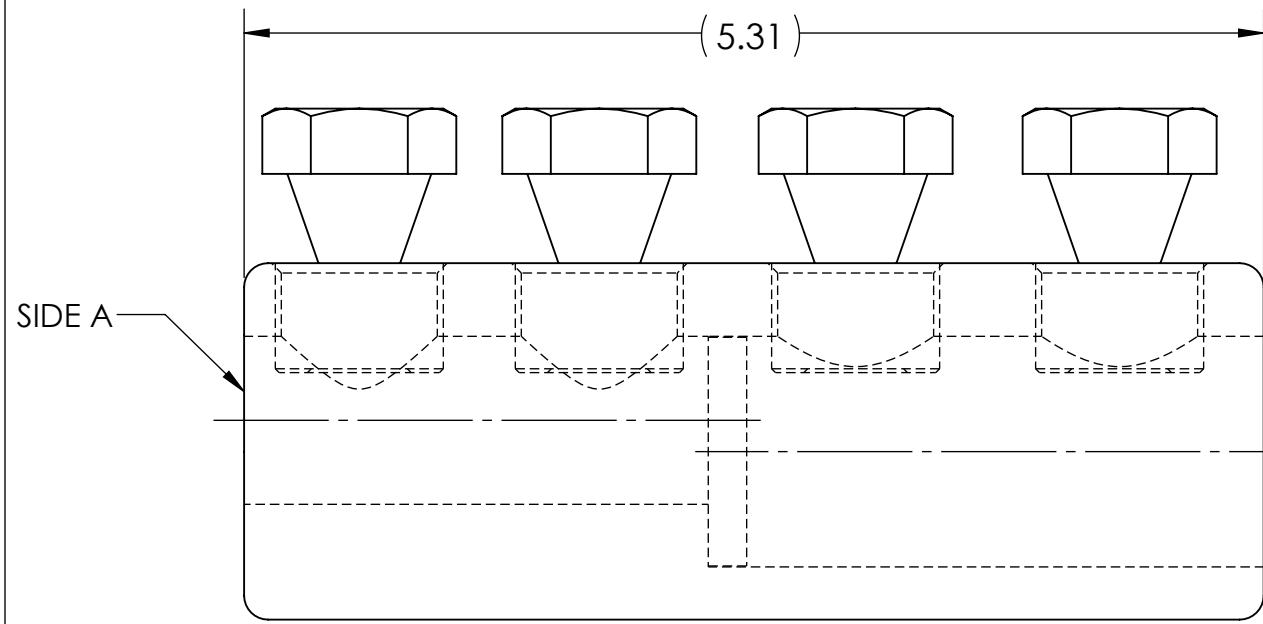


CONDUCTOR STRIP LENGTH SIDE A	CONDUCTOR STRIP LENGTH SIDE B	ESTIMATED BREAK OFF TORQUE
2.00	2.75	50 FT•LB



- STAMPING TO READ:
1. PENN-UNION
 2. SBC-1000-500-A
 3. AL9CU
 4. 350-500 MCM
 5. 1000 MCM
 - 6.



- NOTES:
1. ALL DIMENSIONS IN INCHES UNLESS OTHERWISE SPECIFIED
 2. BODY AND SCREWS MADE FROM HIGH STRENGTH ALUMINUM
 3. TIN PLATED TO INHIBIT CORROSION
 4. RATED FOR COPPER AND ALUMINUM CLASS B & C CONDUCTORS
 5. SOLID CENTER BARRIER TO ENSURE PROPER INSERTION OF CONDUCTORS TO FULL DEPTH AND TO PROVIDE A TIGHT SEAL
 6. WIRE BARRELS ARE PREFILLED WITH OXIDE INHIBITING COMPOUND AND CAPPED
 7. SUITABLE FOR VOLTAGES UP TO 35 KV IF TAPED ACCORDING TO ACCEPTABLE PRACTICES, 5 KV IS THE MAXIMUM VOLTAGE LEVEL IN ALL BARE SPLICE APPLICATIONS
 8. LISTED PER UL 486A-B FOR POWER APPLICATIONS UP TO 90°C
 9. COMPLIANT TO ANSI C119.4, CLASS A CURRENT, CLASS 3 (MINIMUM) TENSION
 10. CONNECTORS ARE PACKAGED INDIVIDUALLY WITH INSTRUCTION SHEET IN SEALED POLY BAG
 11. APPROX. WEIGHT (CAPS, BAGS, INHIBITOR EXCLUDED): 1.220 LB.

	2	4	PLASTIC CAPS (NOT SHOWN)
	X	3	CUAL-AID #11C (NOT SHOWN)
	4	2	SHEAR BOLT
	1	1	SPLICE BODY

QTY.	PT.	NAME OR DESCRIPTION
		ALUMINUM SHEAR BOLT SPLICE for 350-500 MCM, 1000 MCM
		REF. DWG'S: 4J29-56203 H:\4J29\56203_C
		DRAWN BY: QJB DATE: 3/15/2023 CHK'D: NAK
		SCALE: 1:1 INTERPRET PER ASME Y14.5-2009 FILE: 4J29
		SIZE: B
		DWG. NO. SBC-1000-500-A REV. 1

1	12254	8/8/2023
NO.	ECN	DATE
REVISIONS		

SBC-1000-500-A
CAT. NO.

