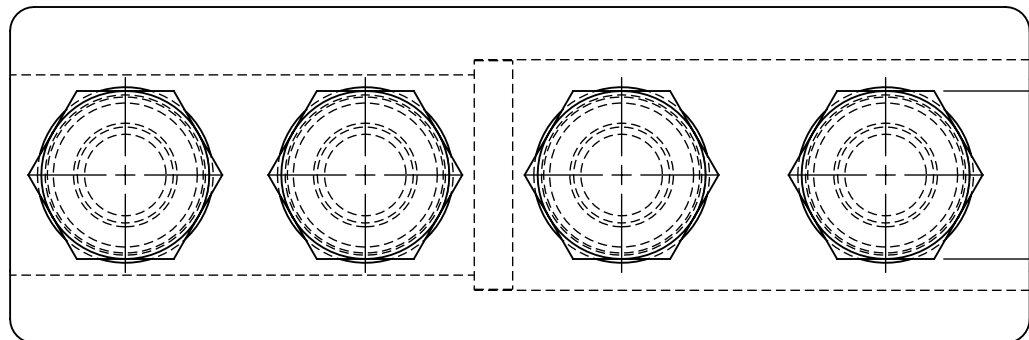
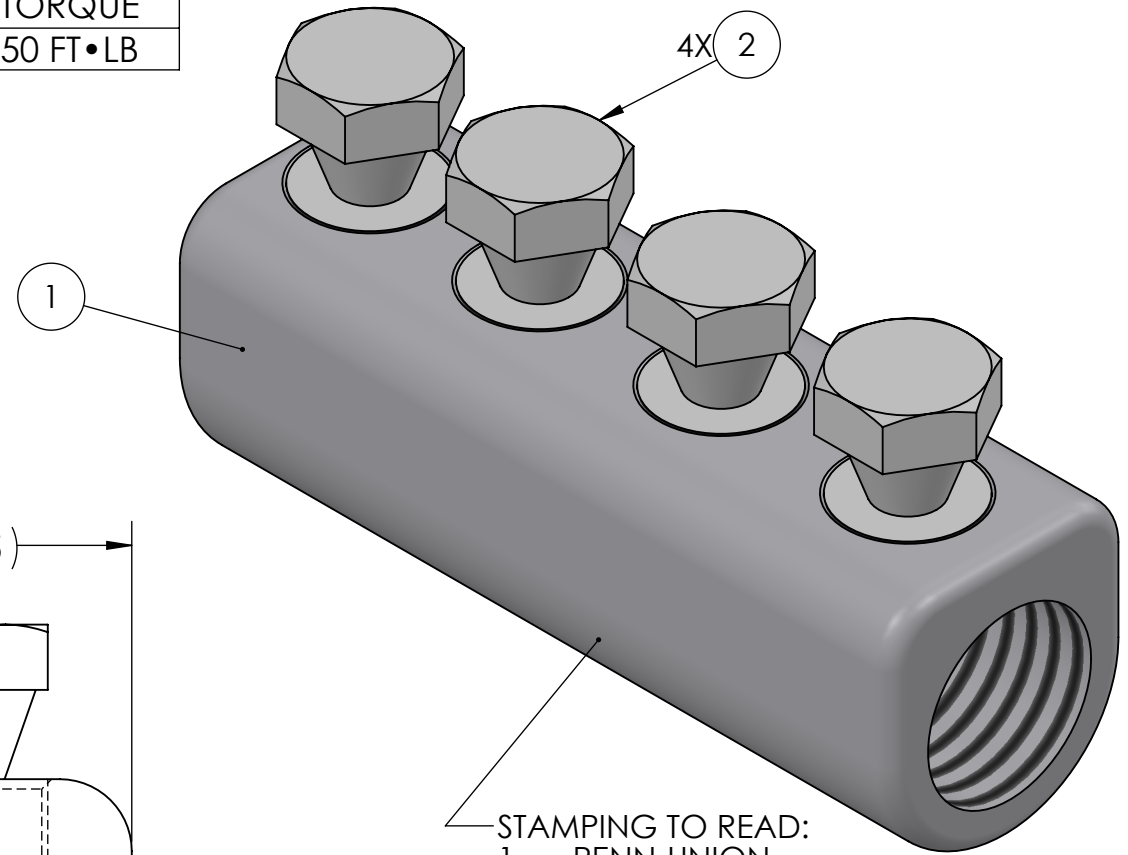
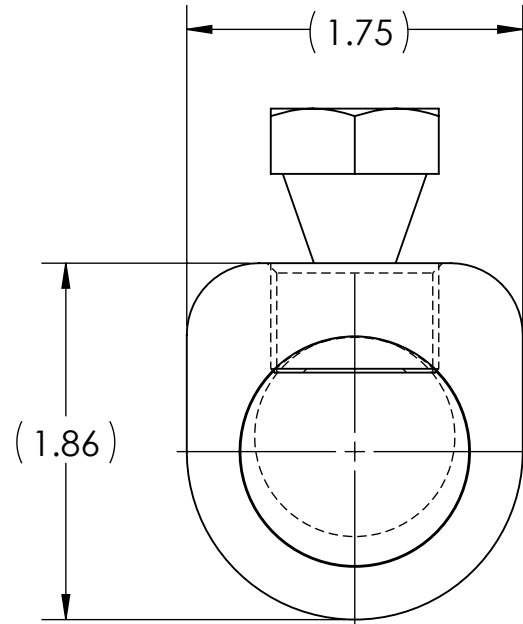
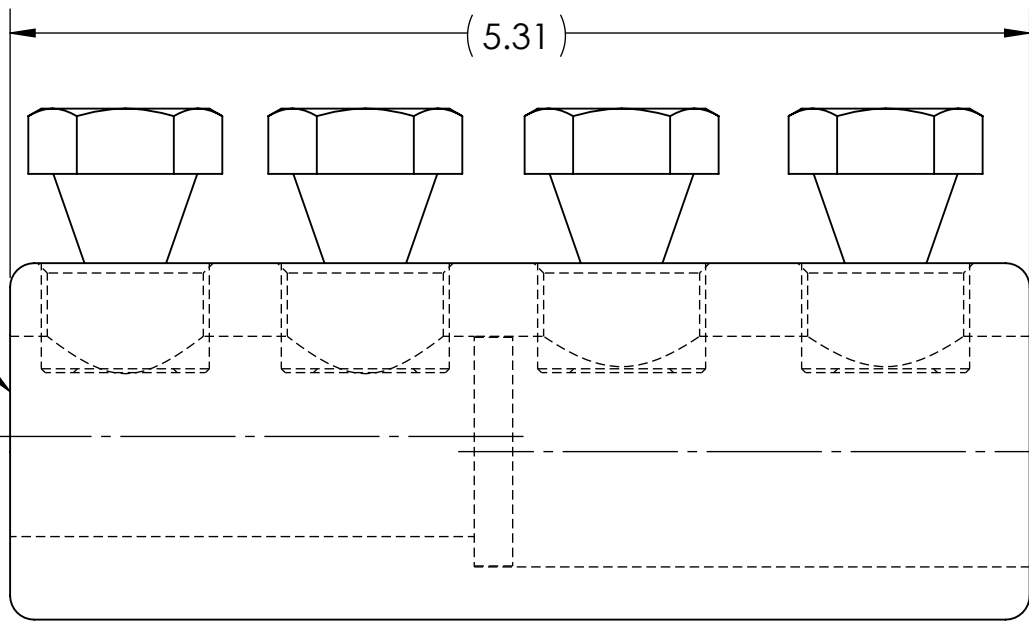


CONDUCTOR STRIP LENGTH SIDE A	CONDUCTOR STRIP LENGTH SIDE B	ESTIMATED BREAK OFF TORQUE
2.50	2.75	50 FT•LB



(4X 7/8 HEX)



STAMPING TO READ:  
 1. PENN-UNION  
 2. SBC-1000-750-A  
 3. AL9CU  
 4. 600-750 MCM  
 5. 1000 MCM  
 6.

**RoHS**  
COMPLIANT

- NOTES:
- ALL DIMENSIONS IN INCHES UNLESS OTHERWISE SPECIFIED
  - BODY AND SCREWS MADE FROM HIGH STRENGTH ALUMINUM
  - TIN PLATED TO INHIBIT CORROSION
  - RATED FOR COPPER AND ALUMINUM CLASS B & C CONDUCTORS
  - SOLID CENTER BARRIER TO ENSURE PROPER INSERTION OF CONDUCTORS TO FULL DEPTH AND TO PROVIDE A TIGHT SEAL
  - WIRE BARRELS ARE PREFILLED WITH OXIDE INHIBITING COMPOUND AND CAPPED
  - SUITABLE FOR VOLTAGES UP TO 35 KV IF TAPED ACCORDING TO ACCEPTABLE PRACTICES, 5 KV IS THE MAXIMUM VOLTAGE LEVEL IN ALL BARE SPLICE APPLICATIONS
  - LISTED PER UL 486A-B FOR POWER APPLICATIONS UP TO 90°C
  - COMPLIANT TO ANSI C119.4, CLASS A CURRENT, CLASS 3 (MINIMUM) TENSION
  - CONNECTORS ARE PACKAGED INDIVIDUALLY WITH INSTRUCTION SHEET IN SEALED POLY BAG
  - APPROX. WEIGHT (CAPS, BAGS, INHIBITOR EXCLUDED): 1.161 LB.

		2	4	PLASTIC CAPS (NOT SHOWN)
		X	3	CUAL-AID #11C (NOT SHOWN)
		4	2	SHEAR BOLT
		1	1	SPLICE BODY

QTY.	PT.	NAME OR DESCRIPTION
<b>ALUMINUM SHEAR BOLT SPLICE</b>		
for 600 - 750 MCM, 1000 MCM		
REF. DWG'S: 4J29-56205		H:\4J29\56205_C
DRAWN BY: QJB		DATE: 3/15/2023
SCALE: 1:1		CHK'D: NAK
SIZE: B		FILE: 4J29
DWG. NO. SBC-1000-750-A		REV. 1

1	12254	8/8/2023
NO.	ECN	DATE
REVISIONS		

**PENNUNION**  
 229 WATERFORD STREET  
 EDINBORO, PA 16412 USA