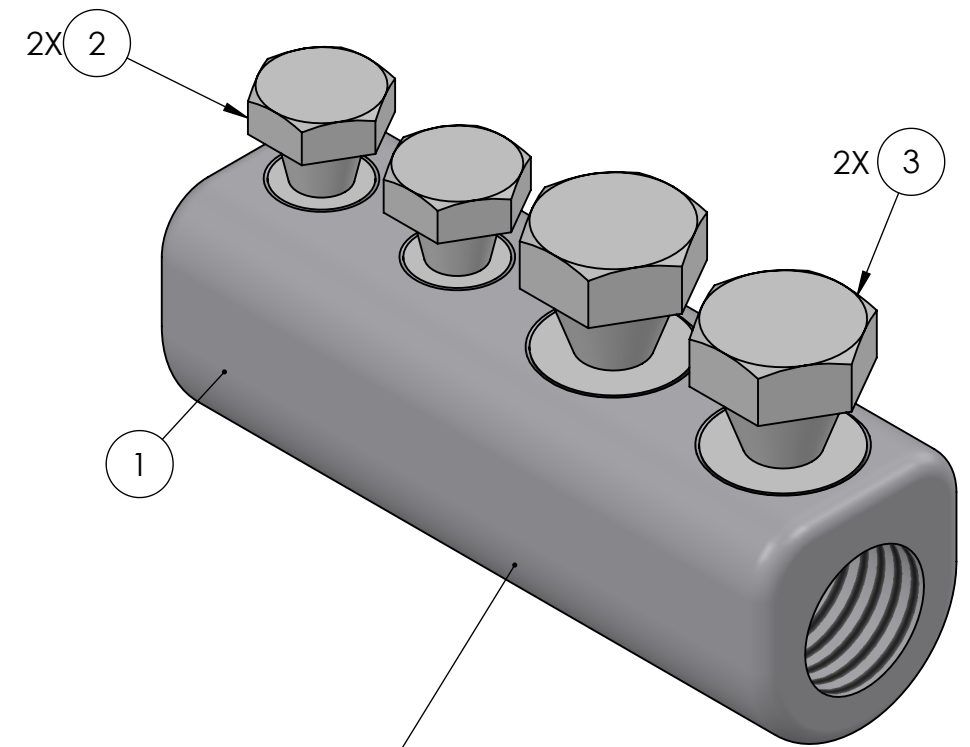
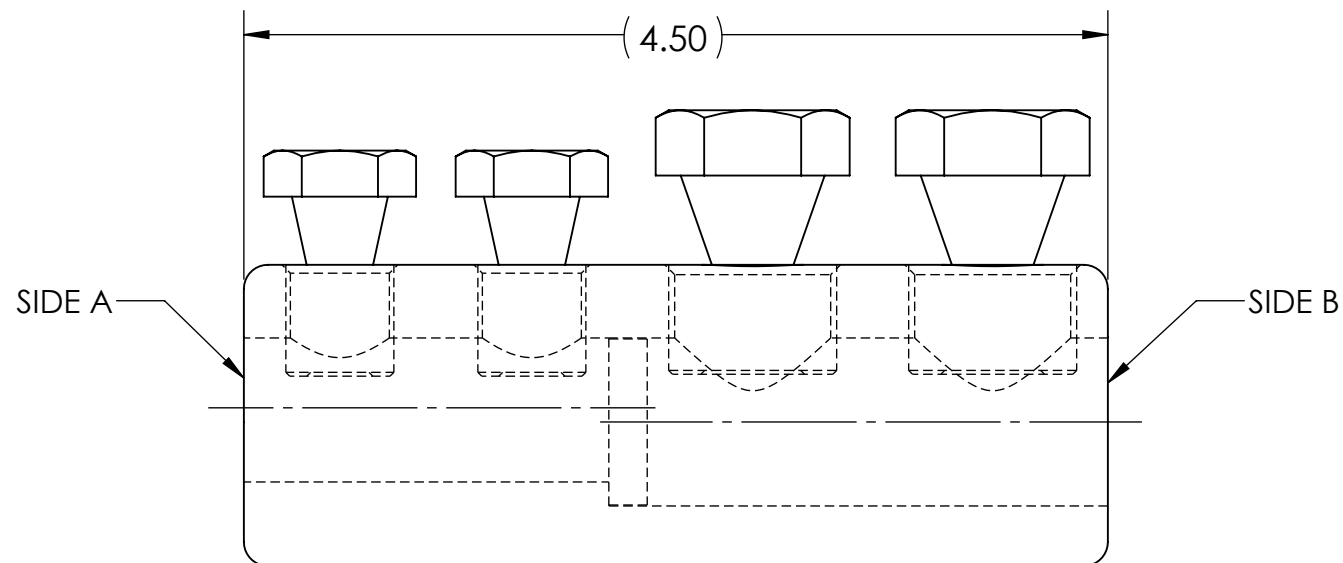
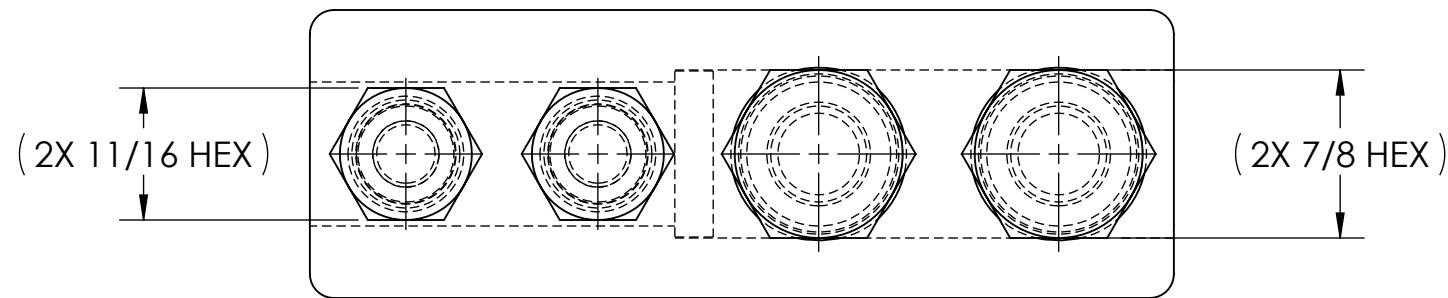


CONDUCTOR STRIP LENGTH	ESTIMATED BREAK OFF TORQUE SIDE A	ESTIMATED BREAK OFF TORQUE SIDE B
2.00	27 FT•LB	50 FT•LB



RoHS
COMPLIANT

- STAMPING TO READ:
1. PENN-UNION
 2. SBC-500-350-A
 3. AL9CU
 4. 250-350 MCM
 5. 500-350 MCM
 - 6.

- NOTES:
1. ALL DIMENSIONS IN INCHES UNLESS OTHERWISE SPECIFIED
 2. BODY AND SCREWS MADE FROM HIGH STRENGTH ALUMINUM
 3. TIN PLATED TO INHIBIT CORROSION
 4. RATED FOR COPPER AND ALUMINUM CLASS B & C CONDUCTORS
 5. SOLID CENTER BARRIER TO ENSURE PROPER INSERTION OF CONDUCTORS TO FULL DEPTH AND TO PROVIDE A TIGHT SEAL
 6. WIRE BARRELS ARE PREFILLED WITH OXIDE INHIBITING COMPOUND AND CAPPED
 7. SUITABLE FOR VOLTAGES UP TO 35 KV IF TAPED ACCORDING TO ACCEPTABLE PRACTICES, 5 KV IS THE MAXIMUM VOLTAGE LEVEL IN ALL BARE SPLICE APPLICATIONS
 8. LISTED PER UL 486A-B FOR POWER APPLICATIONS UP TO 90°C
 9. COMPLIANT TO ANSI C119.4, CLASS A CURRENT, CLASS 3 (MINIMUM) TENSION
 10. CONNECTORS ARE PACKAGED INDIVIDUALLY WITH INSTRUCTION SHEET IN SEALED POLY BAG
 11. APPROX. WEIGHT (CAPS, BAGS, INHIBITOR EXCLUDED): 0.804 LB.

		2	5	PLASTIC CAPS (NOT SHOWN)
		X	4	CUAL-AID #11C (NOT SHOWN)
		2	3	SHEAR BOLT SIDE B
		2	2	SHEAR BOLT SIDE A
		1	1	SPLICE BODY
QTY.	PT.	NAME OR DESCRIPTION		
		ALUMINUM SHEAR BOLT SPLICE for 250-350 MCM, 350-500 MCM		
		REF. DWG'S: 4J29-56199		H:\4J29\56199_C
		DRAWN BY: QJB		DATE: 3/15/2023
		SCALE: 1:1		CHK'D: NAK
		INTERPRET PER ASME Y14.5-2009		FILE: 4J29
		SIZE: B	DWG. NO. SBC-500-350-A	
		229 WATERFORD STREET EDINBORO, PA 16412 USA		REV. -

NO.	ECN	DATE
REVISIONS		