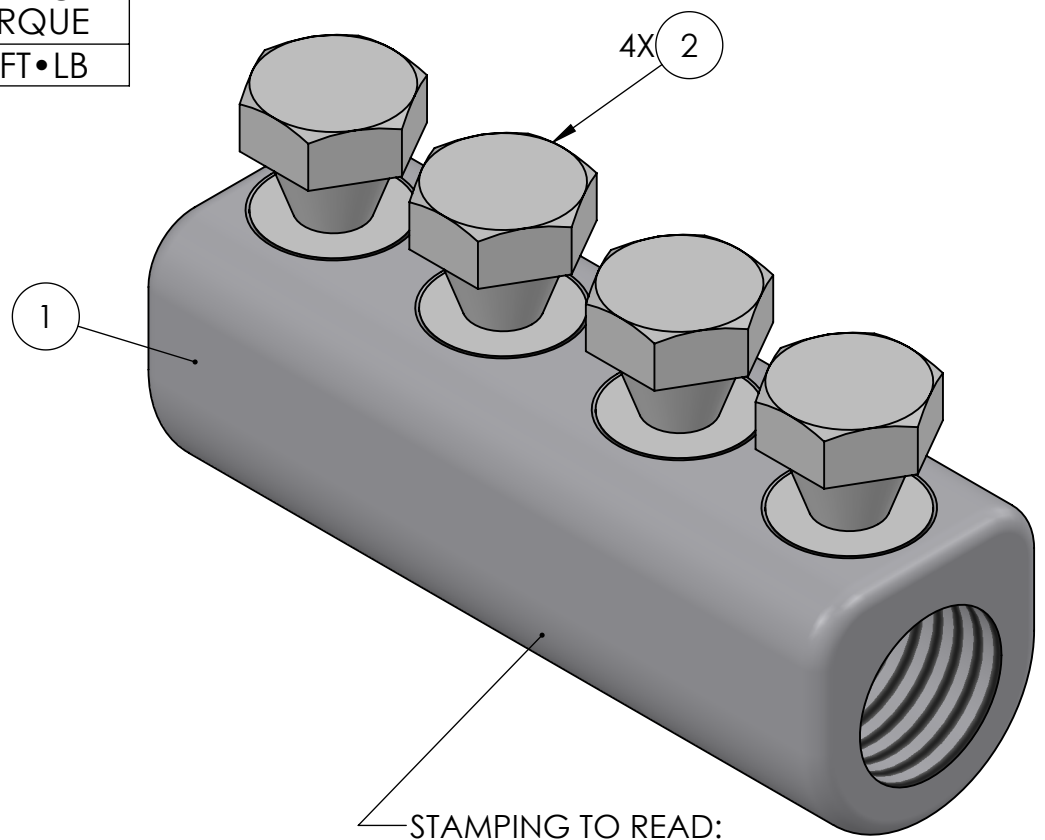
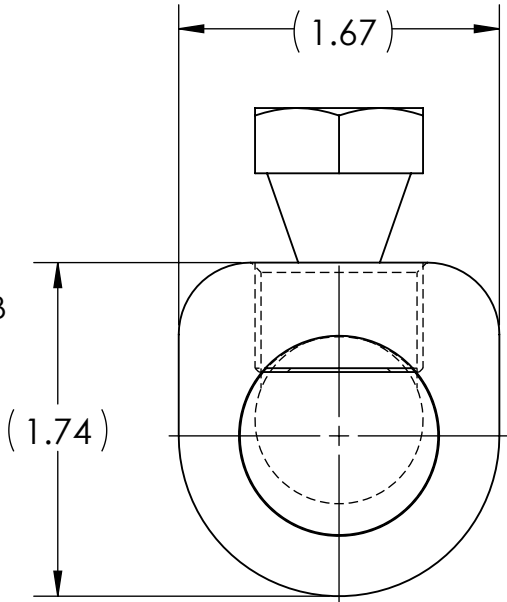
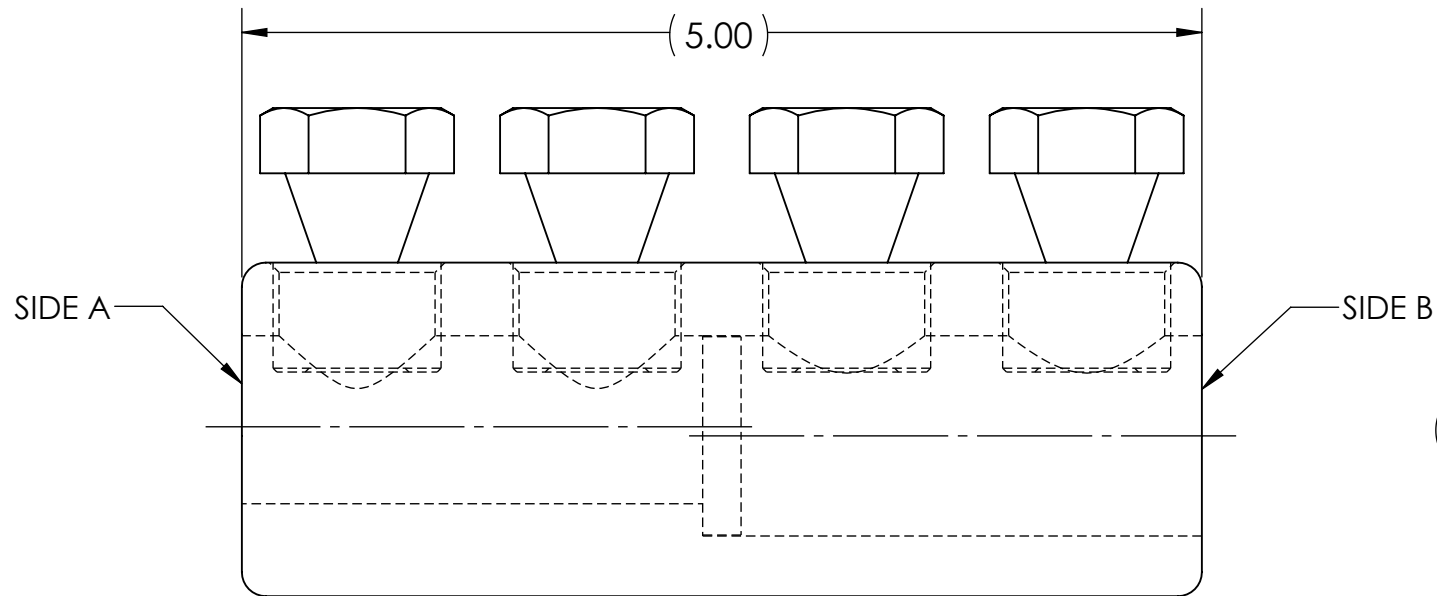
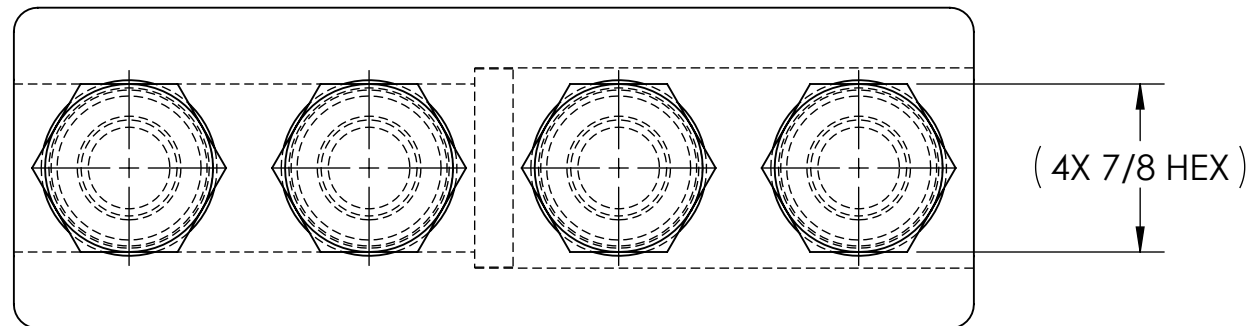


| | | |
|-------------------------------|-------------------------------|----------------------------|
| CONDUCTOR STRIP LENGTH SIDE A | CONDUCTOR STRIP LENGTH SIDE B | ESTIMATED BREAK OFF TORQUE |
| 2.00 | 2.50 | 50 FT•LB |



STAMPING TO READ:
 1. PENN-UNION
 2. SBC-750-500-A
 3. AL9CU
 4. 350-500 MCM
 5. 600-750 MCM
 6.



- NOTES:
- ALL DIMENSIONS IN INCHES UNLESS OTHERWISE SPECIFIED
 - BODY AND SCREWS MADE FROM HIGH STRENGTH ALUMINUM
 - TIN PLATED TO INHIBIT CORROSION
 - RATED FOR COPPER AND ALUMINUM CLASS B & C CONDUCTORS
 - SOLID CENTER BARRIER TO ENSURE PROPER INSERTION OF CONDUCTORS TO FULL DEPTH AND TO PROVIDE A TIGHT SEAL
 - WIRE BARRELS ARE PREFILLED WITH OXIDE INHIBITING COMPOUND AND CAPPED
 - SUITABLE FOR VOLTAGES UP TO 35 KV IF TAPED ACCORDING TO ACCEPTABLE PRACTICES, 5 KV IS THE MAXIMUM VOLTAGE LEVEL IN ALL BARE SPLICE APPLICATIONS
 - LISTED PER UL 486A-B FOR POWER APPLICATIONS UP TO 90°C
 - COMPLIANT TO ANSI C119.4, CLASS A CURRENT, CLASS 3 (MINIMUM) TENSION
 - CONNECTORS ARE PACKAGED INDIVIDUALLY WITH INSTRUCTION SHEET IN SEALED POLY BAG
 - APPROX. WEIGHT (CAPS, BAGS, INHIBITOR EXCLUDED): 1.077 LB.

| | | |
|-----------|-------|----------|
| 1 | 12254 | 8/8/2023 |
| NO. | ECN | DATE |
| REVISIONS | | |

| | | | |
|---|-------------------------------|---------------------|---------------------------|
| | 2 | 4 | PLASTIC CAPS (NOT SHOWN) |
| | X | 3 | CUAL-AID #11C (NOT SHOWN) |
| | 4 | 2 | SHEAR BOLT |
| | 1 | 1 | SPLICE BODY |
| QTY. | PT. | NAME OR DESCRIPTION | |
| ALUMINUM SHEAR BOLT SPLICE for 350-500 MCM, 600-750 MCM | | | |
| REF. DWG'S: 4J29-56202 | | H:\4J29\56202_C | |
| 229 WATERFORD STREET EDINBORO, PA 16412 USA | | DRAWN BY: QJB | DATE: 3/15/2023 |
| | | CHK'D: NAK | FILE: 4J29 |
| SCALE: 1:1 | INTERPRET PER ASME Y14.5-2009 | | SIZE: B |
| DWG. NO. SBC-750-500-A | REV. 1 | | |