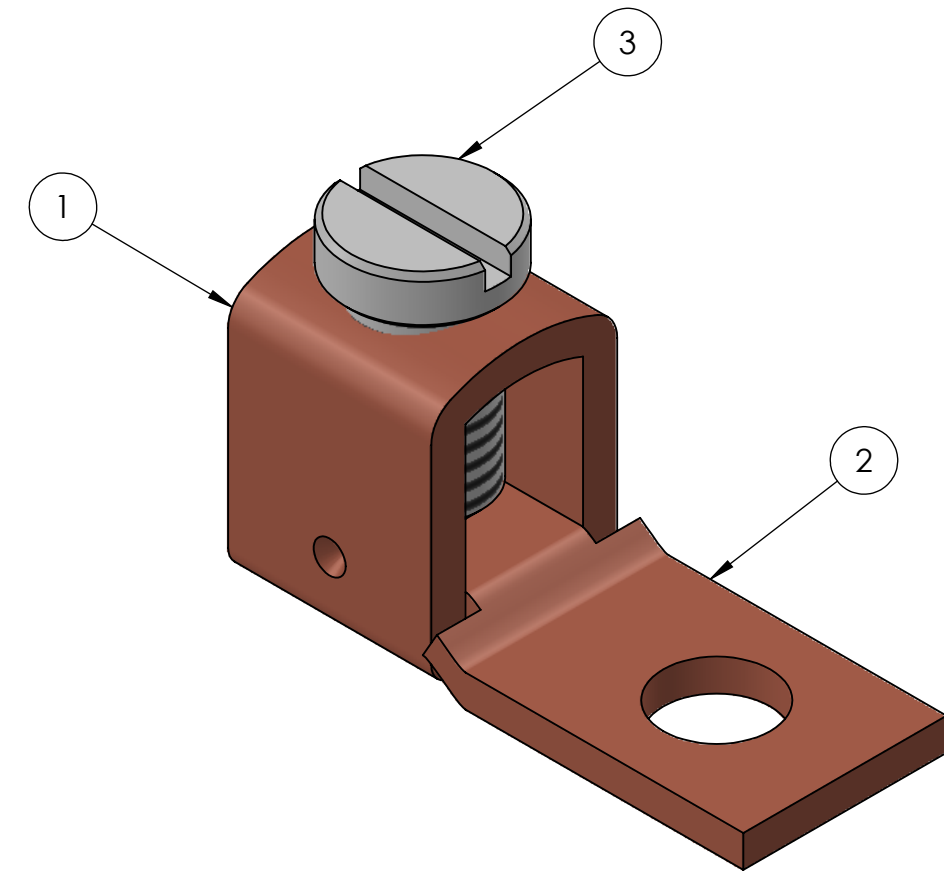
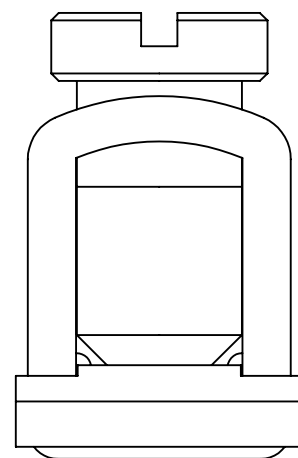
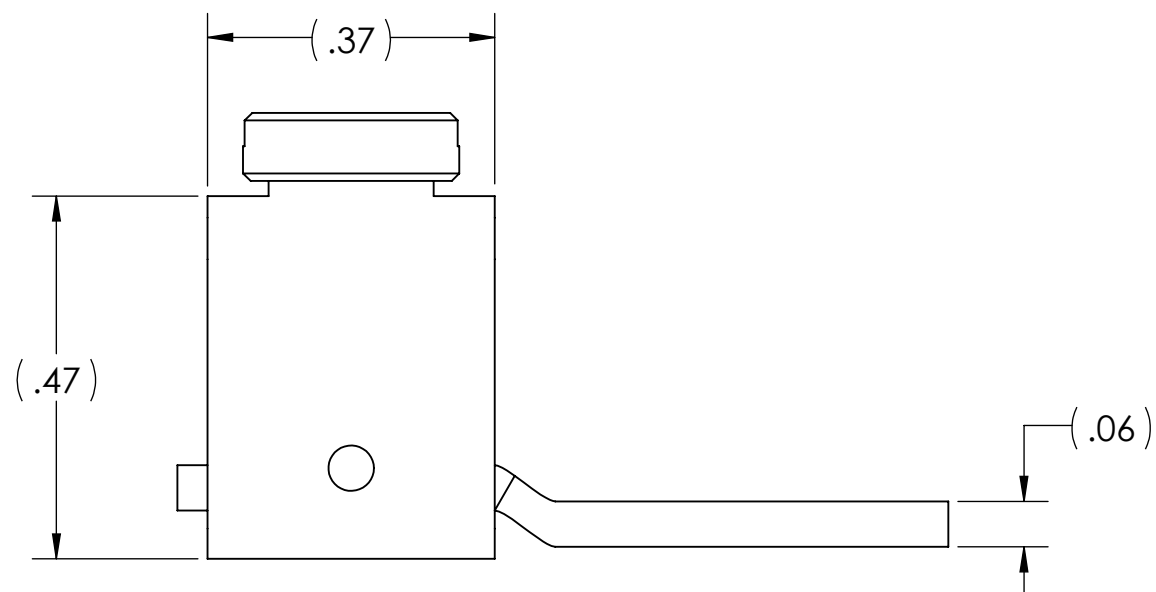
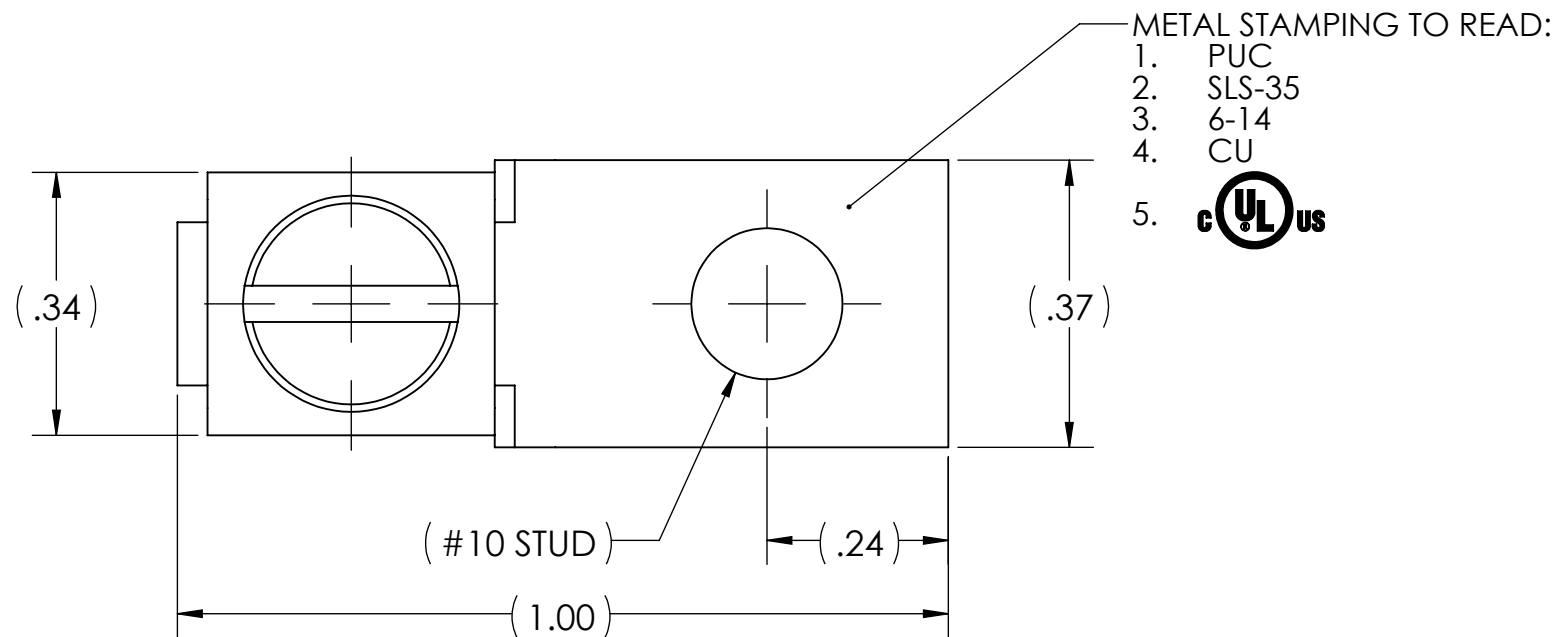


CONDUCTOR RANGE	INSTALLATION TORQUE (IN•LB)
14-10 AWG	13
8 AWG	25
6 AWG	



- NOTES:
- FOR TIN PLATING, SUFFIX CATALOG NUMBER WITH "-TN"
 - ALL DIMENSIONS IN INCHES UNLESS OTHERWISE SPECIFIED
 - cULus LISTED PER UL486A-B FOR POWER APPLICATIONS UP TO 90°C
 - cULus LISTED PER UL467 FOR GROUNDING, BONDING AND DIRECT BURIAL
 - APPROX. WEIGHT: 0.020 LB



NO.	ECN	DATE
1	REDRAWN	11/14/2016
REVISIONS		

1	3	SET SCREW, STEEL, TIN PLATED
1	2	LUG TONGUE, COPPER
1	1	LUG BODY, COPPER
QTY.	PT.	NAME OR DESCRIPTION
COPPER MECHANICAL LUG for 6-14 STR. COPPER CONDUCTORS		
REF. DWG'S: 5509-97090		H:\5509\SLS35
		DRAWN BY: CLT DATE: 7/19/2023 CHK'D: QJB
229 WATERFORD STREET EDINBORO, PA 16412 USA		SCALE: 4:1 INTERPRET PER ASME Y14.5-2009 FILE: 5509
SLS-35	CAT. NO.	DWG. NO. SLS-35 REV. 1