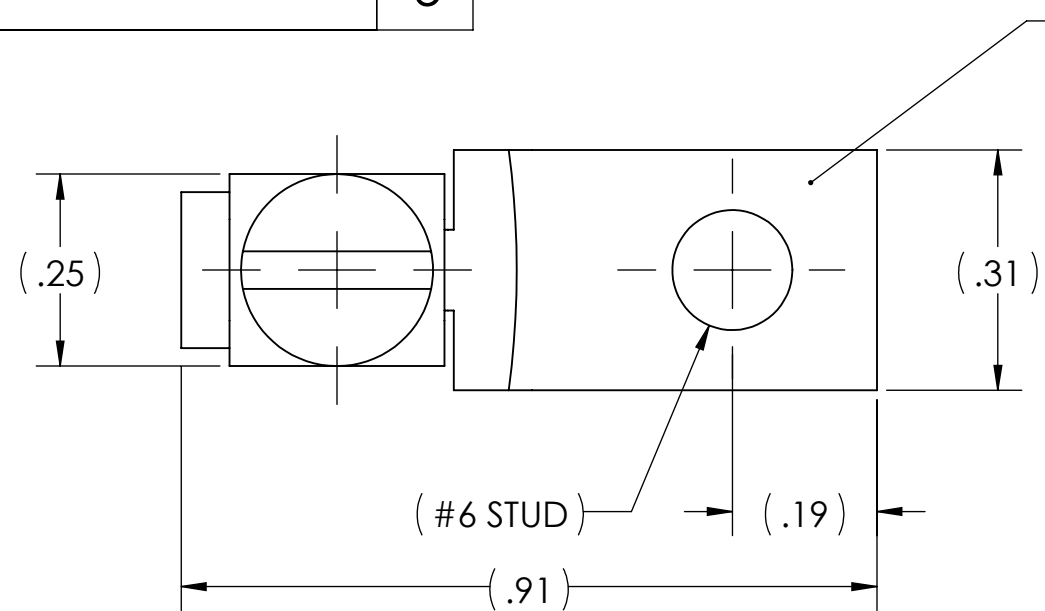


DWG. NO.

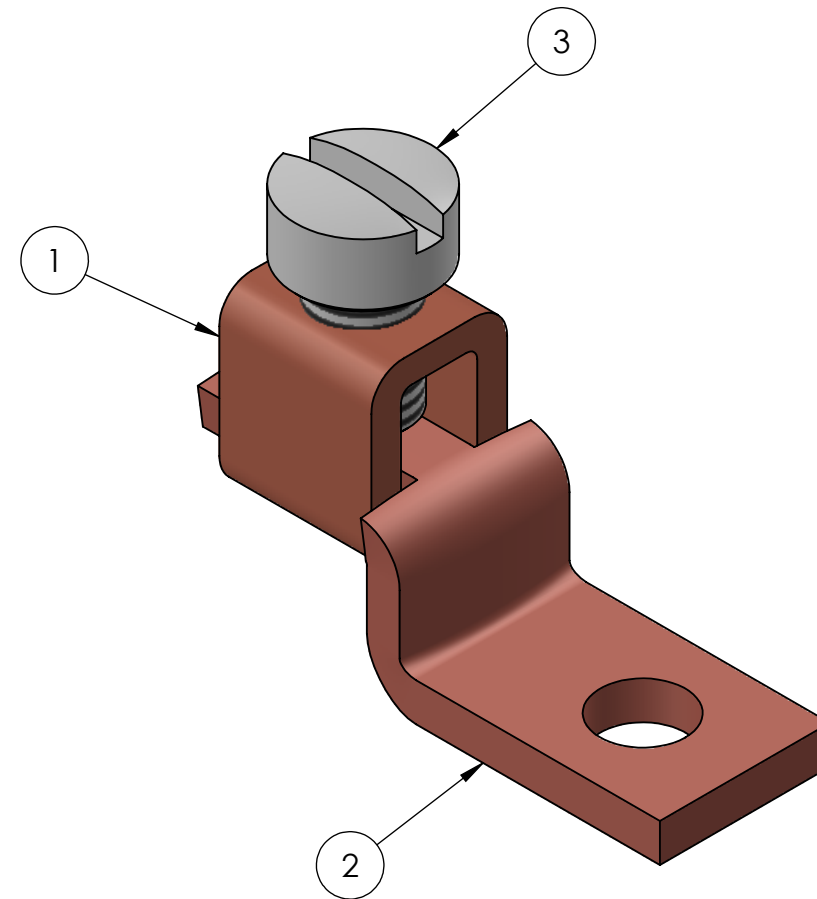
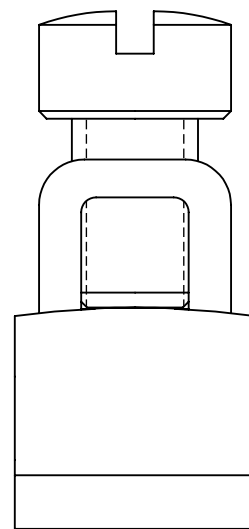
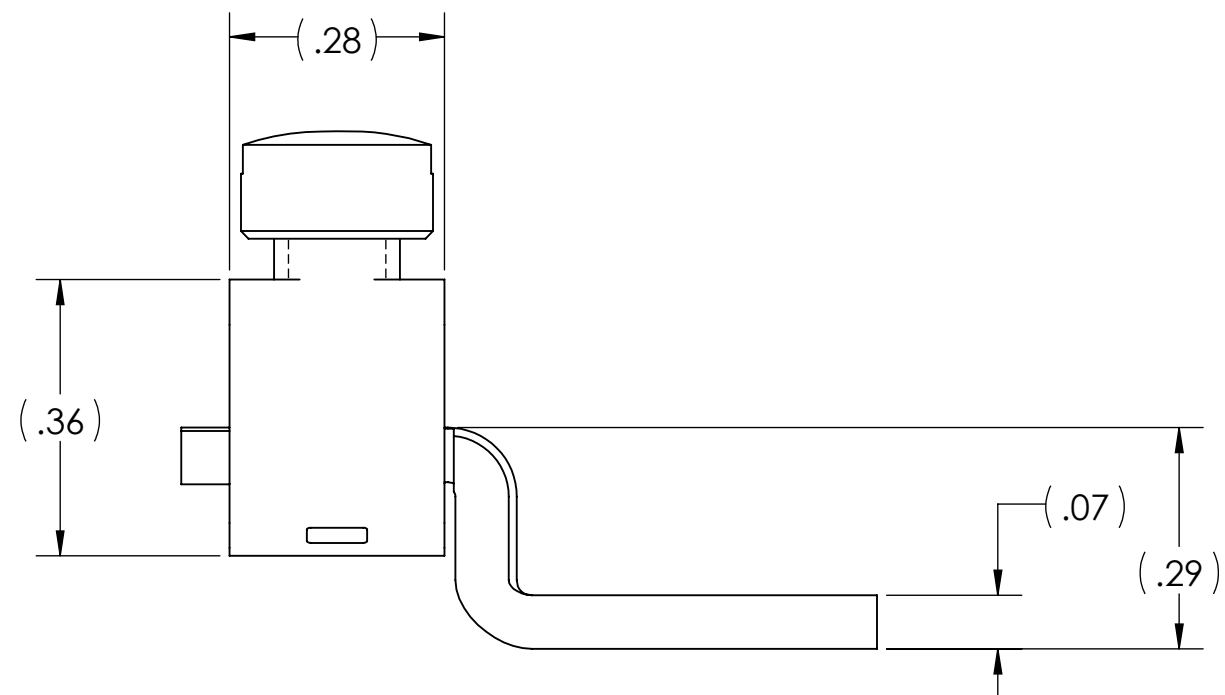
SLU-25

REV. 5



METAL STAMPING TO READ:

1. PUC
2. SLU-25
3. 10-14
4. CU
- 5.



NOTES:

1. ALL DIMENSIONS IN INCHES UNLESS OTHERWISE SPECIFIED
2. FOR TIN PLATING, SUFFIX CATALOG NUMBER WITH "-TN"
3. cULus LISTED PER UL486A-B FOR POWER APPLICATIONS UP TO 90°C
4. INSTALLATION TORQUE: 35 IN•LB
5. APPROX. WEIGHT: 0.013 LB



NO.	ECN	DATE
5	12235	2/22/2023
4	12152	10/29/2021
3	11860	7/2/2019
2	11745	4/4/2018
1	11705	8/24/2017

QTY.	PT.	NAME OR DESCRIPTION
1	3	SET SCREW, STEEL, TIN PLATED
1	2	LUG TONGUE, COPPER
1	1	LUG BODY, COPPER
COPPER MECHANICAL LUG		
for		
10-14 STR. COPPER CONDUCTORS		
REF. DWG'S: 5506-55833		H:\5506\SLU-25
		DRAWN BY: CLT DATE: 7/18/2023 CHK'D: QJB
229 WATERFORD STREET EDINBORO, PA 16412 USA		SCALE: 4:1 INTERPRET PER ASME Y14.5-2009 FILE: 5506
SIZE: B	DWG. NO.	REV.
	SLU-25	5