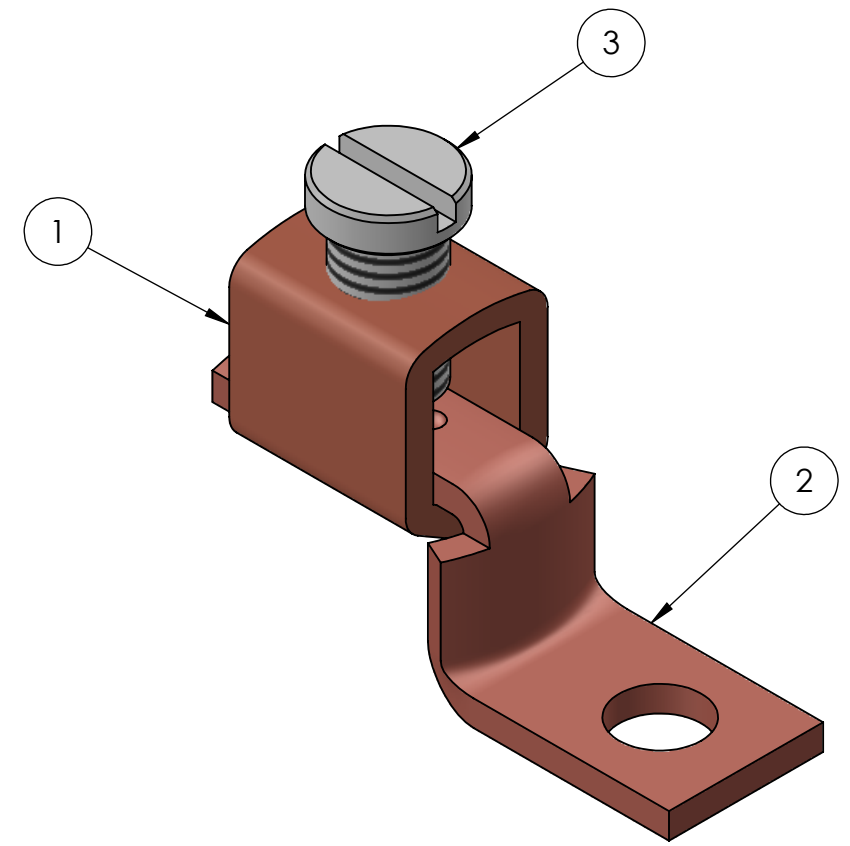
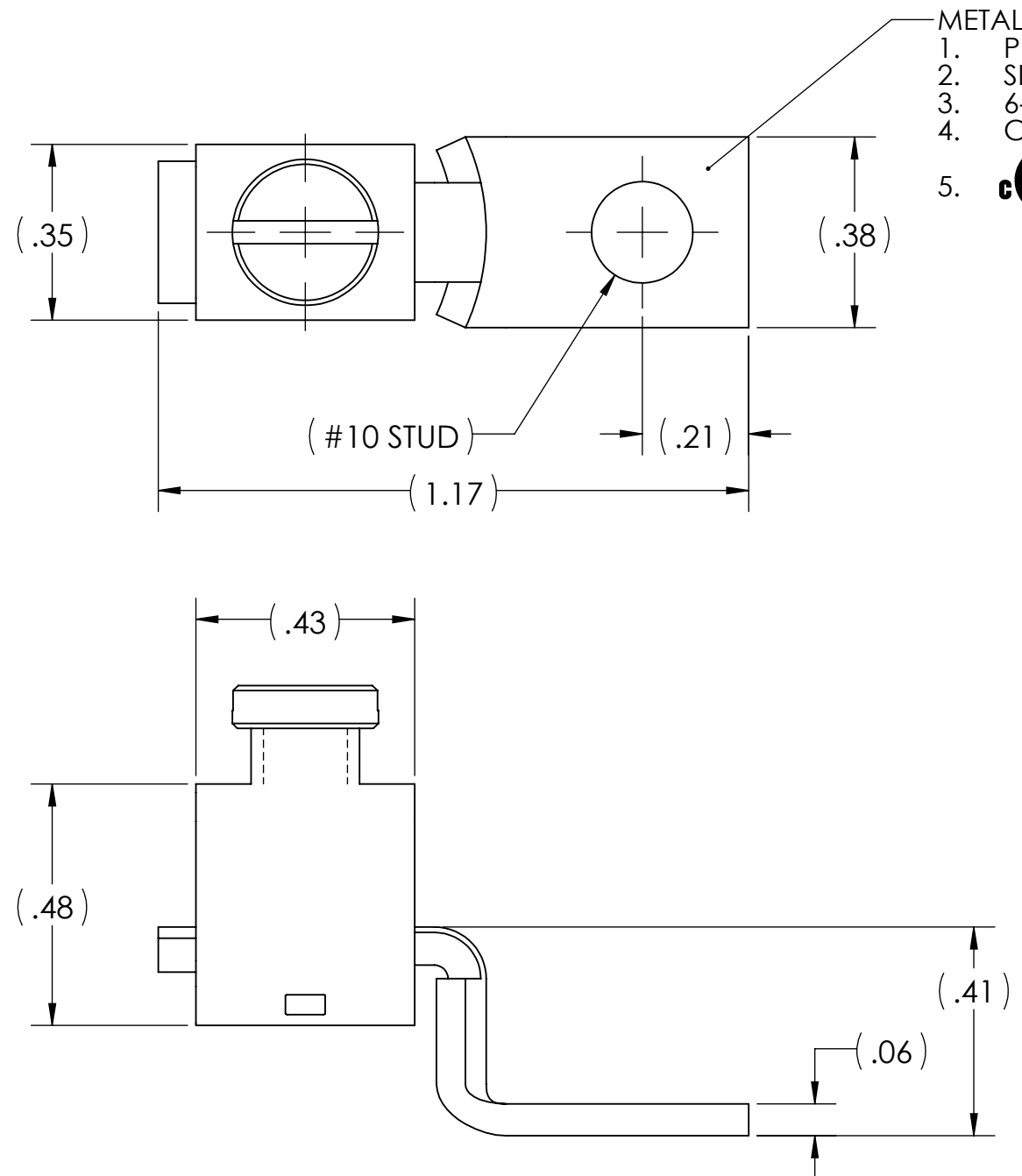


CONDUCTOR RANGE	INSTALLATION TORQUE (IN•LB)
14-10 AWG	20
8 AWG	25
6 AWG	35



- NOTES:
- FOR TIN PLATING, SUFFIX CATALOG NUMBER WITH "-TN"
 - ALL DIMENSIONS IN INCHES UNLESS OTHERWISE SPECIFIED
 - cULus LISTED PER UL486A-B FOR POWER APPLICATIONS UP TO 90°C
 - cULus LISTED PER UL467 FOR GROUNDING, BONDING, AND DIRECT BURIAL
 - APPROX. WEIGHT: 0.024 LB



NO.	ECN	DATE
5	12235	2/22/2023
4	12152	10/29/2021
3	11860	7/2/2019
2	11745	4/4/2018
1	11705	8/24/2017

	1	3	SET SCREW, STEEL, BLUE ZINC PLATED
	1	2	LUG TONGUE, COPPER
	1	1	LUG BODY, COPPER
QTY.	PT.	NAME OR DESCRIPTION	
COPPER MECHANICAL LUG			
for 6 STR.-14 SOL. COPPER CONDUCTORS			
REF. DWG'S: 5506-55833		H:\5506\SLU-35	
 229 WATERFORD STREET EDINBORO, PA 16412 USA		DRAWN BY: CLT	DATE: 7/19/2023
		CHK'D: QJB	FILE: 5506
SIZE: B	DWG. NO. SLU-35	REV. 5	