
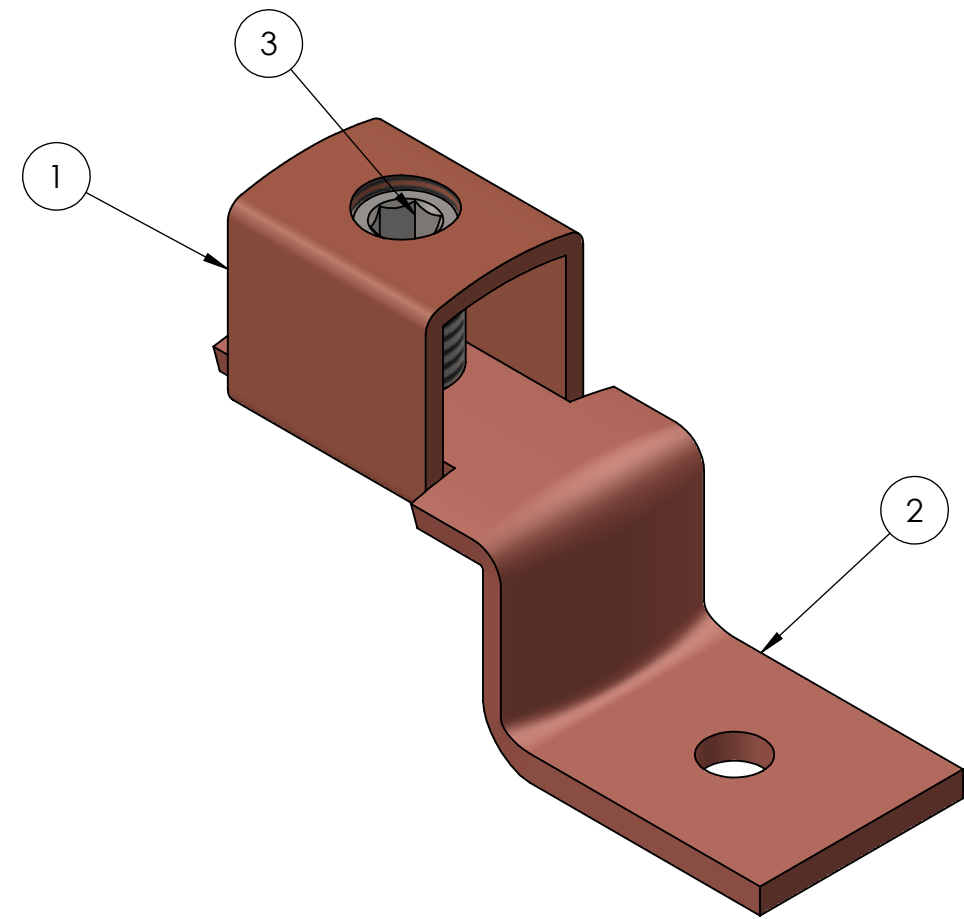
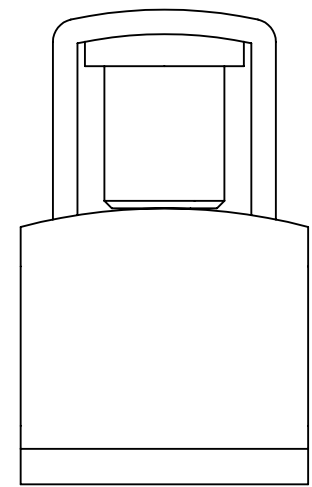
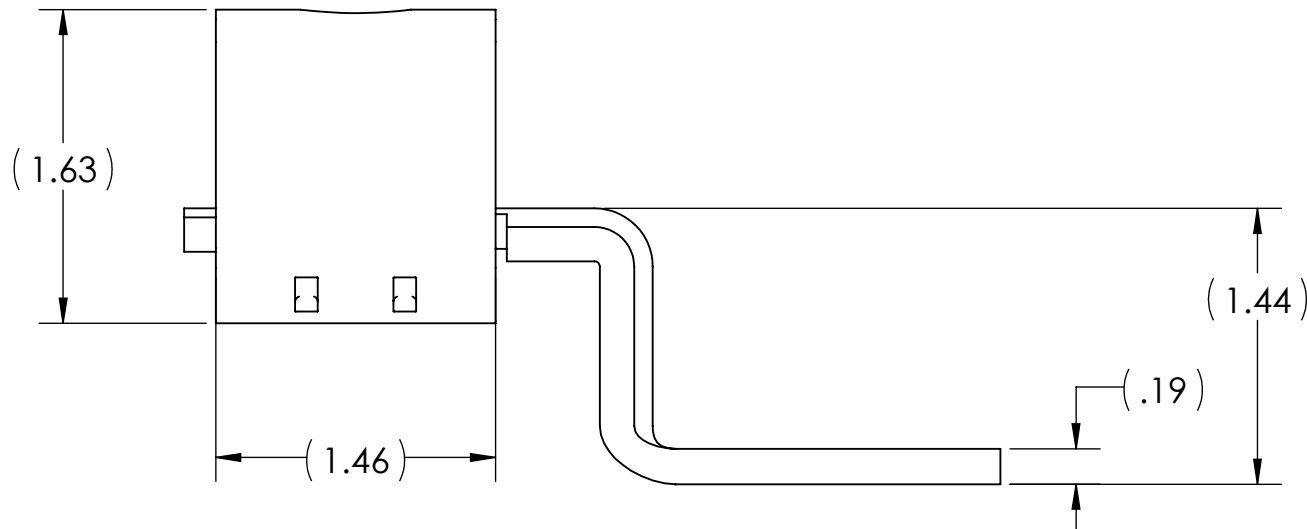
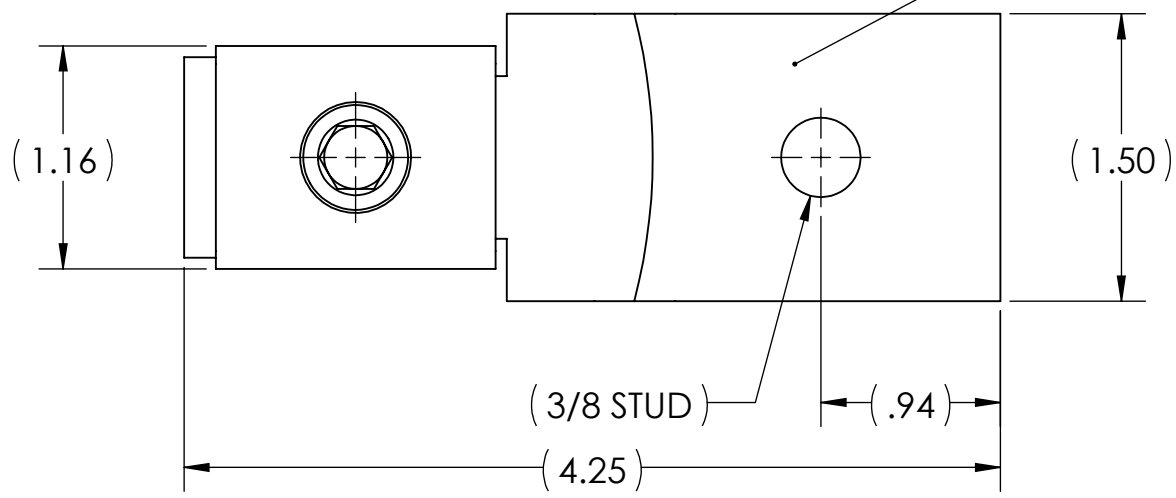


METAL STAMPING TO READ:

1. PUC
2. SLU-400
3. 500-4/0
4. CU
5. 




NOTES:

1. FOR TIN PLATING, SUFFIX CATALOG NUMBER WITH "-TN"
2. ALL DIMENSIONS IN INCHES UNLESS OTHERWISE SPECIFIED
3. cULus LISTED PER UL486A-B FOR POWER APPLICATIONS UP TO 90°C
4. cULus LISTED PER UL467 FOR GROUNDING, BONDING, AND DIRECT BURIAL
5. INSTALLATION TORQUE: 275 IN•LB
6. HEX SIZE: 5/16
7. APPROX. WEIGHT: 0.732 LB



| NO. | ECN   | DATE       |
|-----|-------|------------|
| 5   | 12235 | 2/22/2023  |
| 4   | 12152 | 10/29/2021 |
| 3   | 11860 | 7/2/2019   |
| 2   | 11745 | 4/4/2018   |
| 1   | 11705 | 8/24/2017  |

| 1                                                                                     | 3       | SET SCREW, STEEL, BLUE ZINC PLATED                        |
|---------------------------------------------------------------------------------------|---------|-----------------------------------------------------------|
| 1                                                                                     | 2       | LUG TONGUE, COPPER                                        |
| 1                                                                                     | 1       | LUG BODY, COPPER                                          |
| QTY.                                                                                  | PT.     | NAME OR DESCRIPTION                                       |
| <b>COPPER MECHANICAL LUG</b>                                                          |         |                                                           |
| for<br>500 MCM-4/0 STR. COPPER CONDUCTORS                                             |         |                                                           |
| REF. DWG'S: 5506-55833                                                                |         | H:\5506\SLU400                                            |
|  |         | DRAWN BY: CLT    DATE: 7/19/2023    CHK'D: QJB            |
| 229 WATERFORD STREET<br>EDINBORO, PA 16412 USA                                        |         | SCALE: 1:1    INTERPRET PER ASME Y14.5-2009    FILE: 5506 |
| DWG. NO.                                                                              | SLU-400 | REV. 5                                                    |