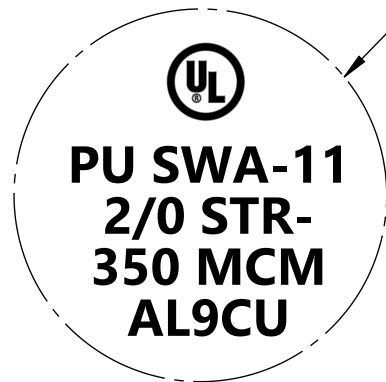
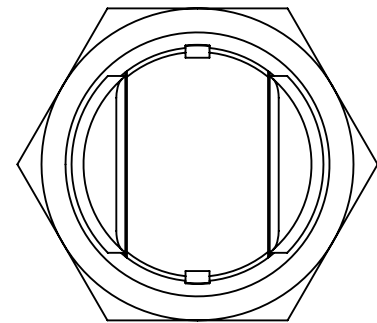
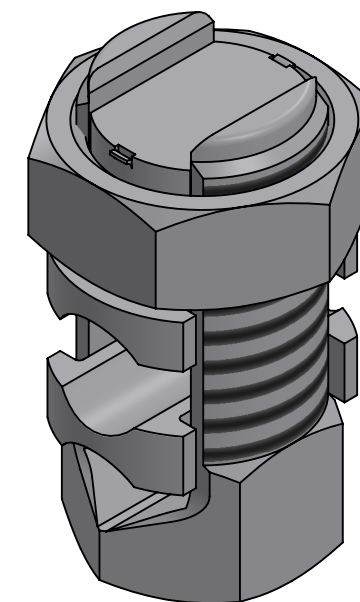
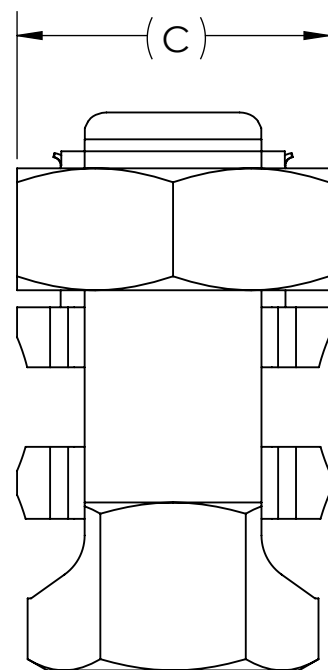
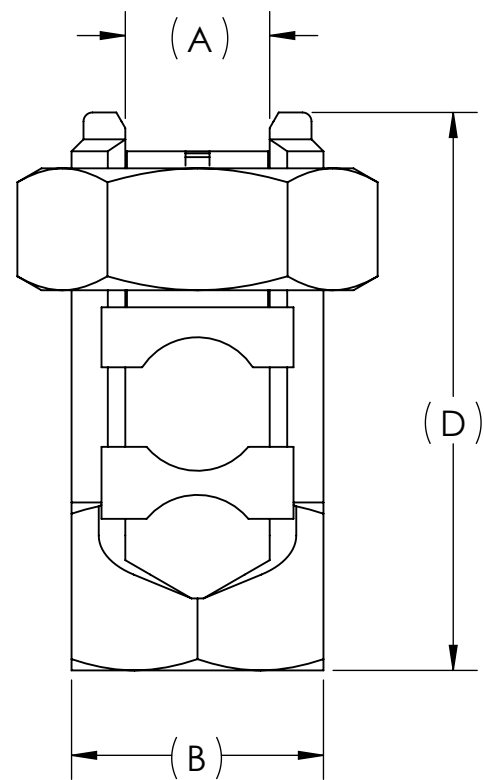


CAT. No.	"A"	"B"	"C"	"D"	WIRE RANGE	EST. WEIGHT (LB)	TORQUE (IN•LB)
SWA-7	.374	.750	1.000	1.812	6 SOL. - 1/0 STR.	0.089	385
SWA-8	.419	.875	1.125	2.108	2 SOL. - 2/0 STR.	0.131	390
SWA-10	.584	1.188	1.500	2.625	1/0 STR. - 250 MCM	0.281	650
SWA-11	.752	1.312	1.625	2.906	2/0 STR. - 350 MCM	0.352	650
SWA-12	.838	1.500	1.813	3.281	3/0 STR. - 500 MCM	0.514	825



SWA-11 INK STAMP IS SHOWN FOR REFERENCE ONLY. INK STAMP WILL VARY BY SKU.



- NOTES:
- ALL DIMENSIONS IN INCHES UNLESS OTHERWISE NOTED
 - FIGURE IS REPRESENTATIVE. EXACT COMPONENT FEATURES MAY VARY
 - ALL COMPONENTS MANUFACTURED FROM TIN PLATED HIGH STRENGTH ALUMINUM
 - UL LISTED PER UL486A-B FOR ALUMINUM AND COPPER CONDUCTORS AT 90°C
 - CONNECTOR CAN BE USED WITH ANY COMBINATION OF CONDUCTORS WITHIN RANGE
 - USE OF AN OXIDE INHIBITOR IS RECOMMENDED WITH THIS CONNECTOR



NO.	ECN	DATE
6	12115	8/12/2021
5	11886	10/9/2019
4	10765	3/28/06
3	10603	9/11/03
2	9949B	6/18/86
1	8644	8/1/84

QTY.	PT.	NAME OR DESCRIPTION
		ALUMINUM SPLIT BOLT for ALUMINUM AND COPPER CONDUCTORS
REF. DWG'S: 4C08-53722-		H:\4C08\53722_C
DRAWN BY: QJB DATE: 8/12/2021 CHK'D: NAK		SCALE: 1:1 INTERPRET PER ASME Y14.5-2009 FILE: 4C08
SIZE: B		DWG. NO. SWA SERIES
SEE TABLE		REV. 6
CAT. NO.		229 WATERFORD STREET EDINBORO, PA 16412 USA